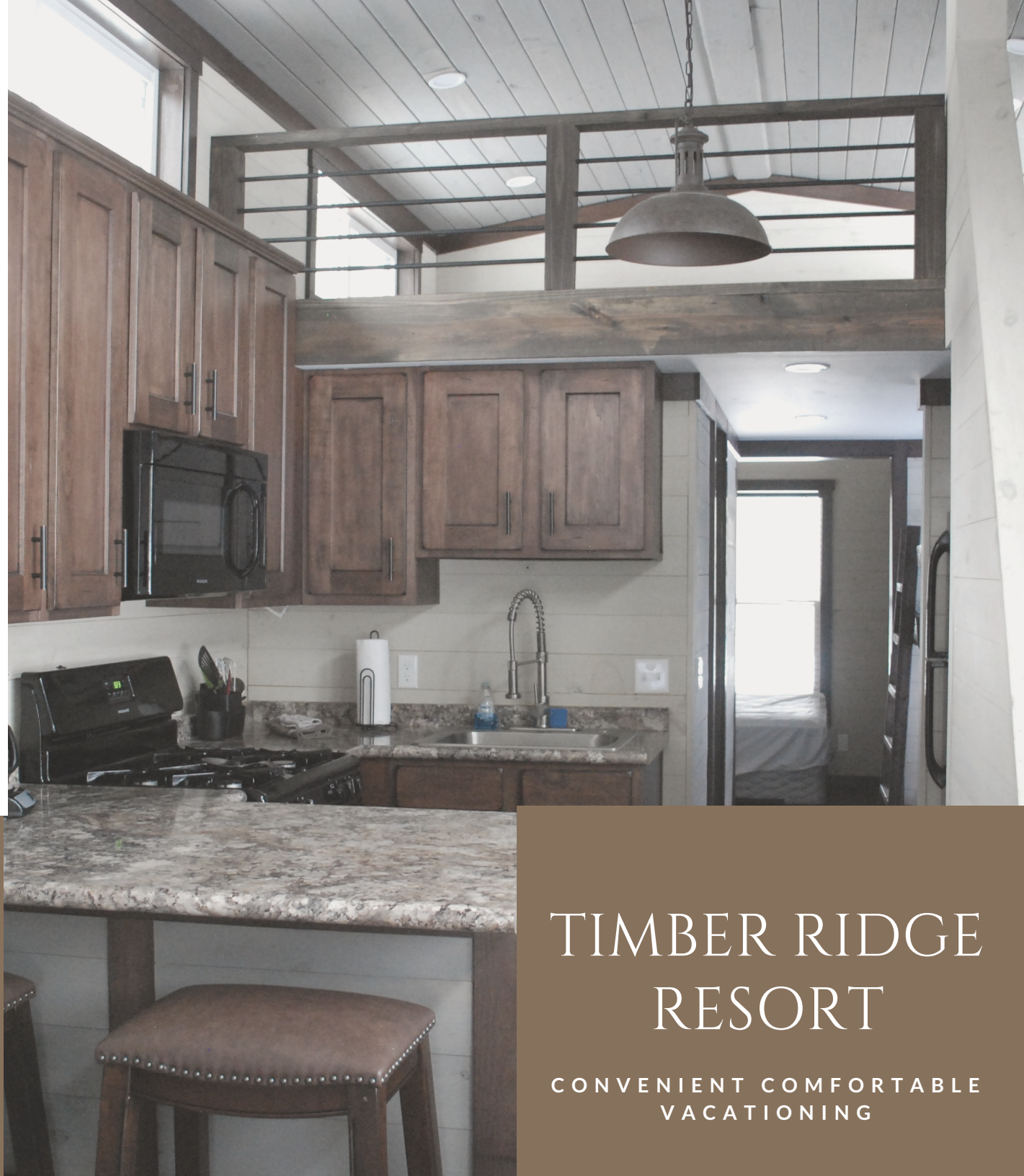


WE TAKE
PRIDE IN OUR
RESORT AND
WORK
TIRELESSLY
TO MAKE IT
A PLACE TO
CALL YOUR
SECOND
HOME...



COME SEE FOR
YOURSELF

4050 Hammond Rd. E,
Traverse City, MI
231-947-2770
or visit our web site
www.timberidgeresort.net

TIMBER RIDGE
RESORT

CONVENIENT COMFORTABLE
VACATIONING

PARK MODELS

COST

When compared to the purchase of a condominium or second home, Park Models are significantly less. They are classified and titled as recreational vehicles which enables consumers to vacation for a fraction of what it would normally cost to purchase and own land in the Grand Traverse area.

SIZE

400 square feet is the maximum size by federal law. However, additional features can be added. A mini second floor loft or an 8-12 ft porch with an extended roof overhang and railings are options.

PERMANENT RESIDENCY

Park Models are vacation homes and due to township regulations, they cannot be utilized as primary residences. The property must be vacant for a minimum of 4 months per calendar year.

SUBLETTING

We do not allow privately owned Park Models to be sublet at Timber Ridge Resort. Your immediate family may utilize the unit but you may not rent or lease the home.



WHAT IS A PARK MODEL

A “park model” or technically called a Recreational Park Trailer (RPT), is the most affordable, luxurious vacation cottage in America. Park Model pricing can vary and depends on amenities. Purchased park models can be placed on a leased site at Timber Ridge Resort for \$3,800 a season (April 18-October 17). Gas and electric utilities are billed separately and winter access is an additional \$300 per calendar year. Our local township also collects a \$36 per year assessment fee.

ENJOY RELAXING,
AFFORDABLE
LIVING FROM
APRIL THROUGH
OCTOBER IN
TRAVERSE CITY,
MICHIGAN



Timber Ridge

TRAVERSE CITY MI

(231) 947.2770
4050 Hammond Rd. • Traverse City, MI 49696
www.TimberRidgeResort.net



PARK MODEL LIVING AT TIMBER RIDGE RESORT

A park model home at Timber Ridge is the perfect vacation getaway. We take care of the delivery and set-up on your chosen site. You just turn the key, move in your personal belongings and enjoy. It's the perfect place to escape with family, friends or even alone with your favorite recreation gear and a good book. Once you settle in, you may never want to leave.

A park model at Timber Ridge is more than just a financial investment. It's also a commitment to spending time with family and friends, enjoying healthy outdoor activities, and creating memories that will be cherished for years to come. It's a getaway you will relish visiting and proud to bring your guests.

A park model, or recreational park trailer, is built on a trailer chassis, has axles, a trailer hitch and is titled as a trailer coach under the Motor Vehicle Code.



Park Model RVs

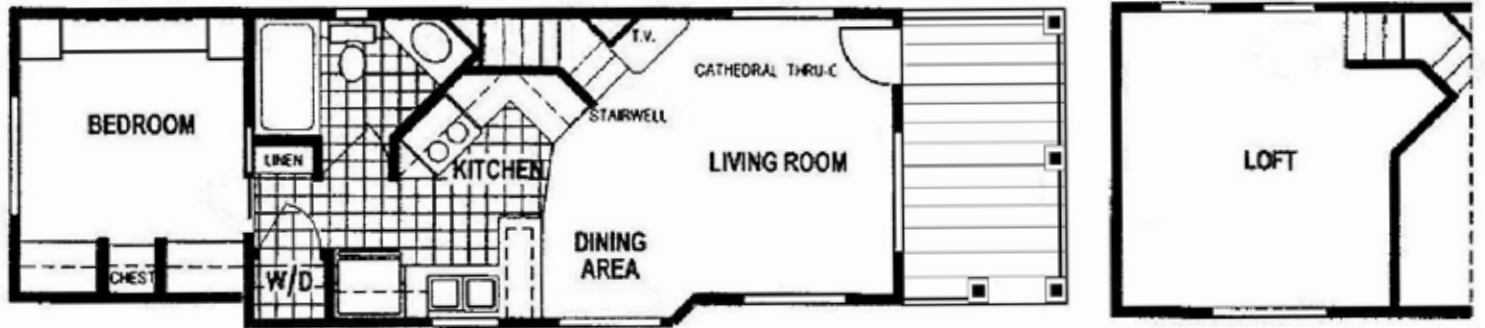
▶ Unlike mobile homes — which are a form of low-cost, permanent housing, Park models are movable resort homes designed as temporary living quarters for recreational, camping, or seasonal use.

Wider than conventional travel trailers and 5th wheels, park models are typically 12 feet wide and 30 plus feet long and can be built up to 400 square feet.



In addition to the 400 sq. ft. of actual living space, you can add a loft for sleeping and storage, and front and/or rear porches. Porches are very popular because they provide a covered area to grill and a comfortable place to sit and enjoy the outdoor surroundings.

Typical floor plans include a private bedroom, bathroom, kitchen with full size appliances, dining area, a living room, and optional lofts. A park model is just a smaller version of a regular house.



Built with a variety of floor plans and with styles ranging from a rustic cabin to an urban feel cottage. Upscale in appearance with bay windows, vinyl flooring or carpet, cathedral ceilings, tape and textured interior walls, lofts, and covered porches.

Units can be customized to suit the owner's style, taste, needs, and there are options galore.



The blueprint is yours to personalize. The design possibilities are endless.



SKYLINE®

STRENGTH • KNOWLEDGE • TRUST



30# Trussed roof rafters @ 24" O.C.

R-13 wall insulation



3/8" OSB exterior wall sheathing

R-19 roof insulation

1/2" sheetrock walls & ceilings



Vented soffits with continuous ridge venting

30 year architectural shingles (shown with optional standing seam steel roof)

Front & rear overhangs

7/16" OSB roof decking w/ Ice & Water shield underlayment

Vinyl clad, low "e" thermo-pane windows

50A / 240 VAC electrical service



House wrap weather barrier on exterior walls

R-22 floor insulation & poly-mesh underbelly wrap

19/32" OSB T&G floor decking

2" x 6" transverse floor joists and 2" x 4" exterior & interior walls @ 16" O.C.

Diamond Kote Smart siding with 4" window and corner trim

Twin 10" steel I-beam frame with steel supporting outriggers and cross members @ 4' O.C.



STANDARD FEATURES

Frame

Twin 10" steel I-beams
Full width steel supporting outriggers @ 4' O.C.
Steel cross members between I-beams @ 4' O.C.
10" Detachable hitch

Floor System

2" x 6" transverse floor joists @ 16" O.C.
19/32" OSB T&G floor decking
Insulated heat ducting w/ perimeter floor registers
R-22 Fiberglass floor insulation
Super-strong poly-mesh underbelly wrap

Wall System

90" Sidewall height
2" x 4" Top & bottom plate
2" x 4" Exterior & interior walls @ 16" O.C.
Each 2" x 4" stud is strapped to the floor system
R-13+ Fiberglass insulation
3/8" OSB wood exterior with vapor barrier
Diamond Kote™ siding w/ 4" window and corner trim

Roof System

6/12 Roof pitch (except in loft area)
Front & rear overhangs with vented soffits
30# Trussed roof rafters @ 24" O.C.
Each truss is strapped to the wall system
R-22 Fiberglass insulation
7/16" OSB roof decking
Ice & Water shield entire roof surface (except porch)
Continuous ridge venting system
30 year deluxe architectural shingles

Exterior

Vinyl clad, low "e" thermo-pane windows w/ tilt sash
Egress windows in bedroom and lofts
36" Steel entry door with window blinds and deadbolt
Butyl tape sealant around all windows and doors
Lights at all exterior doors
Exterior GFI receptacle on patio side of unit
Outside access water heater door

Interior Features

½" sheetrock walls and ceilings throughout
Satin interior paint throughout
3" base molding & 2 ¾" crown molding at ceiling
1 ¾" trim around windows
Window valances w/ 1-½" blinds t/o
Cathedral or clerestory ceiling t/o (except in loft areas)
6-Panel white passage & pocket doors (per floor plan)
Pre-finished door jambs
52" Ceiling fan w/ light in L.R.
Recessed ceiling lighting & chandelier dining light
Wired for cable TV
Wood spindle or drywall ½ high loft walls
Plush style carpet w/ high density pad

Kitchen / Bath

Whirlpool white or black finished appliances
18 Cu. Ft. 2 door Frost Free Refrigerator
30" L/P gas range with full size oven
Spacesaver microwave range hood
Power exhaust fan vented to outside
Stainless steel sink w/ single lever faucet & sprayer
Drawer over door base cabinet construction
Raised panel hardwood cabinet doors w/ stiles
Lined overhead cabinets w/ adjustable shelves
Deluxe cabinet & drawer pulls
Laminate finished counters w/ 6" Ceramic tile backsplash
54" tub/shower or shower w/ full surround
Ceiling vented exhaust fan w/ light
Porcelain lavatory sink w/ single lever faucet
Built in medicine cabinet
Elongated commode
Toe kick registers

Bedroom

Mirrored wardrobe doors with drawers below
Dual nightstands & sconce reading lights

Plumbing

20 Gal. electric water heater
Water shut-off valves t/o
PEX water lines w/ low point drains
Exterior water spigot

General Features

Carbon monoxide w/ smoke detector
Fire extinguisher
40,000 BTU gas furnace w/ auto ignition
50 Amp / 240VAC electrical service
Heat tape GFI receptacle at water inlet
Easy winterizing system
10' Covered Front Porch
U/L approved electrical devices & copper wiring throughout
RVIA approved & built to ANSI 119.5 code

Popular Options

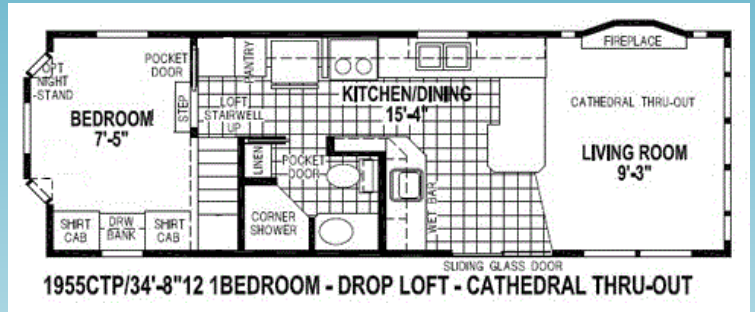
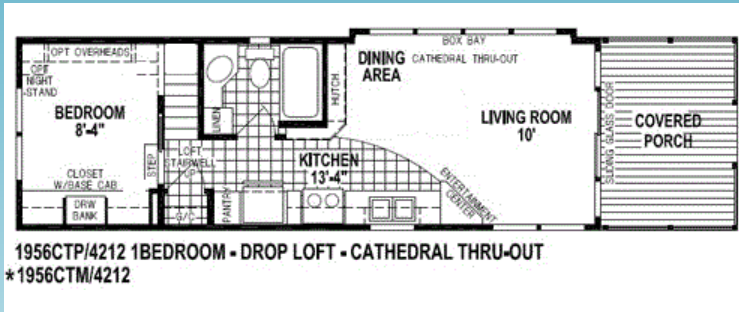
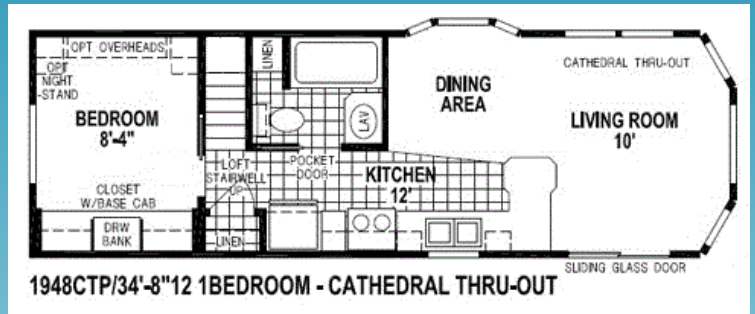
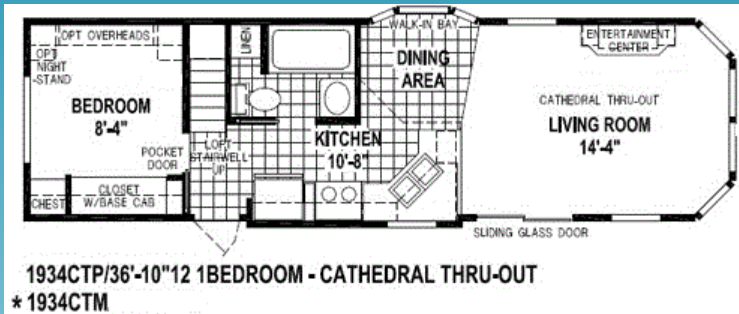
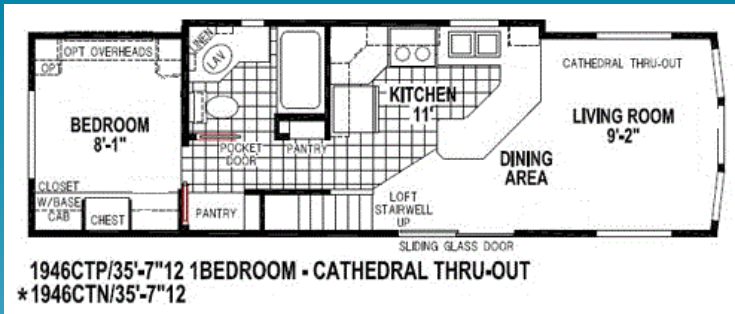
4 Window clerestory
Glass inserts in overhead cabinets
Stainless steel appliances
12' Covered front porch
Prep for W/D hookup
Outside unit or loft A/C unit
Bay window in dining area (most models)

SKYLINE®

RVIA



Below is our most popular models, all of which can be customized for you.



A Park model is one of the most affordable "Get-Away" vacation home in America.



The Recreation Vehicle Industry Association (RVIA) operates a safety standards and inspection program that requires member manufacturers of recreation vehicles to affix an RVIA standards program seal to every unit they build in their factories. This seal indicates the manufacturer's certification that the RV complies with the requirements of all applicable standards. A recreational park trailer can always be identified by the blue and gold RVIA ANSI A119.5 certification seal (or its predecessor green RPTIA seal) affixed adjacent to the main door of the unit. The ANSI A119.5 Standard mandates over 500 safety requirements covering plumbing, heating, electrical, fire and life safety as well as construction requirements.

Timber Ridge



Who should buy a Park Model home?

Working professionals, families, outdoor sporting enthusiasts, "empty nesters", retirees, and anyone looking for:

- seasonal residence in the Traverse City area
- a summer cottage
- a weekend retreat or vacation cottage
- an affordable place to be near family for visits (especially grandchildren)



Timber Ridge

TRAVERSE CITY MI



Are Park Model homes affordable?

When compared to the purchase of a condominium or second home, they are significantly less.

Purchasing a park model home and residing on a site at Timber Ridge Resort is a fraction of what it would normally cost to purchase and own a condominium or house in the Grand Traverse area.

Park Model owners do not acquire any interest in TIMBER RIDGE's real property other than a yearly license to use the property and one site on which to keep a "recreational unit".

Your annual license covers your site, maintenance of the resort, resort office and staff, use of the facilities and amenities of the Resort, site water, sewer & cable TV, WI-FI, trash removal (from the dumpsters). You will be responsible for your own electricity and LP gas. The amount will vary with usage.

There is also a yearly personal property tax per park model paid to the local township.

FOR MORE INFORMATION CONTACT US:

(877) 978.3866 or (231) 947.2770
4050 Hammond Rd. • Traverse City, MI 49696
www.TimberRidgeResort.net

A LITTLE BIT ABOUT US.

TIMBER RIDGE RV & Recreation Resort currently is a 275-site resort positioned on 80 acres in Grand Traverse County and adjoining the Pere Marquette State Forest. Conveniently located just a few miles from downtown Traverse City and many other Northern Michigan attractions and destinations in the area.



Lakeside

PARK MODELS







Lakeside



Clayton



clayton

get out
in o









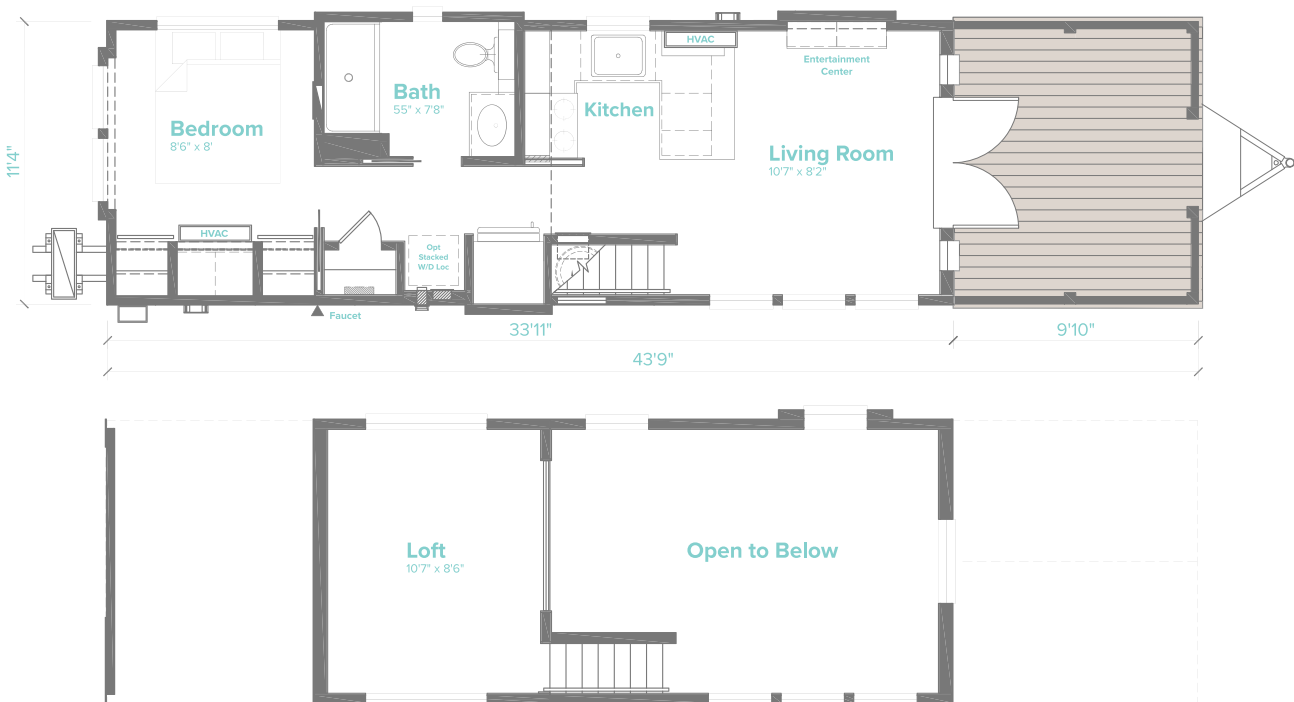






THE SEABREEZE LS-104

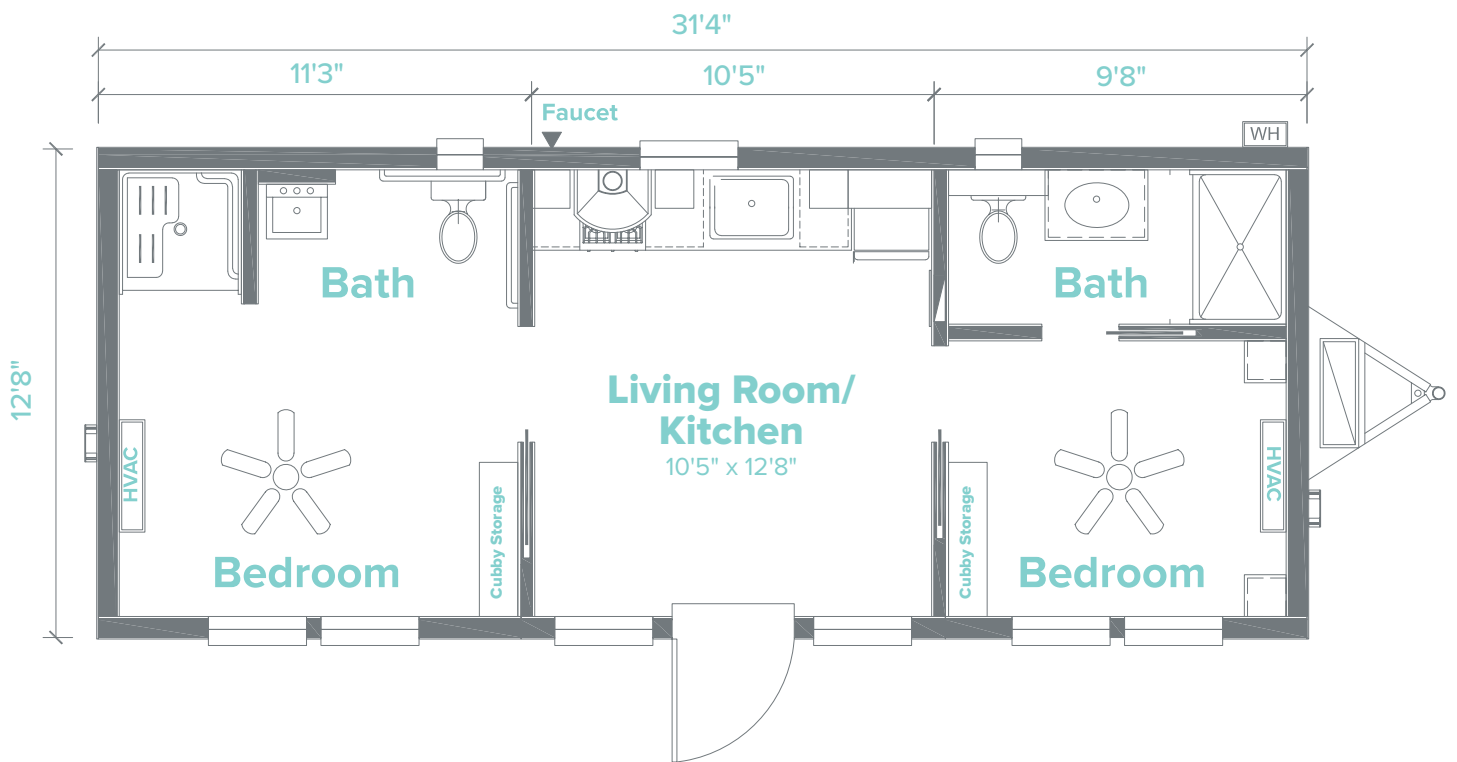
394 Sq Ft | 12x44 (with porch) | 





THE HIGHLAND LS-112

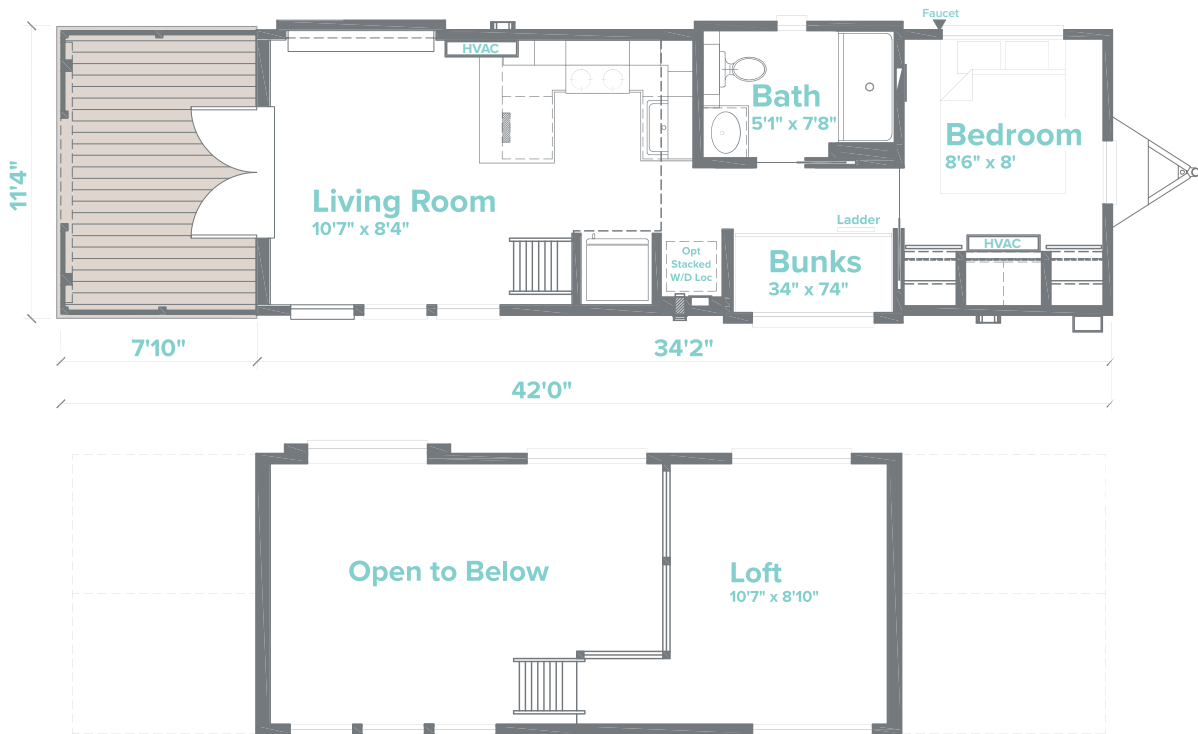
396 Sq Ft | 13' x 32' | 





THE ALEXANDER LS-101

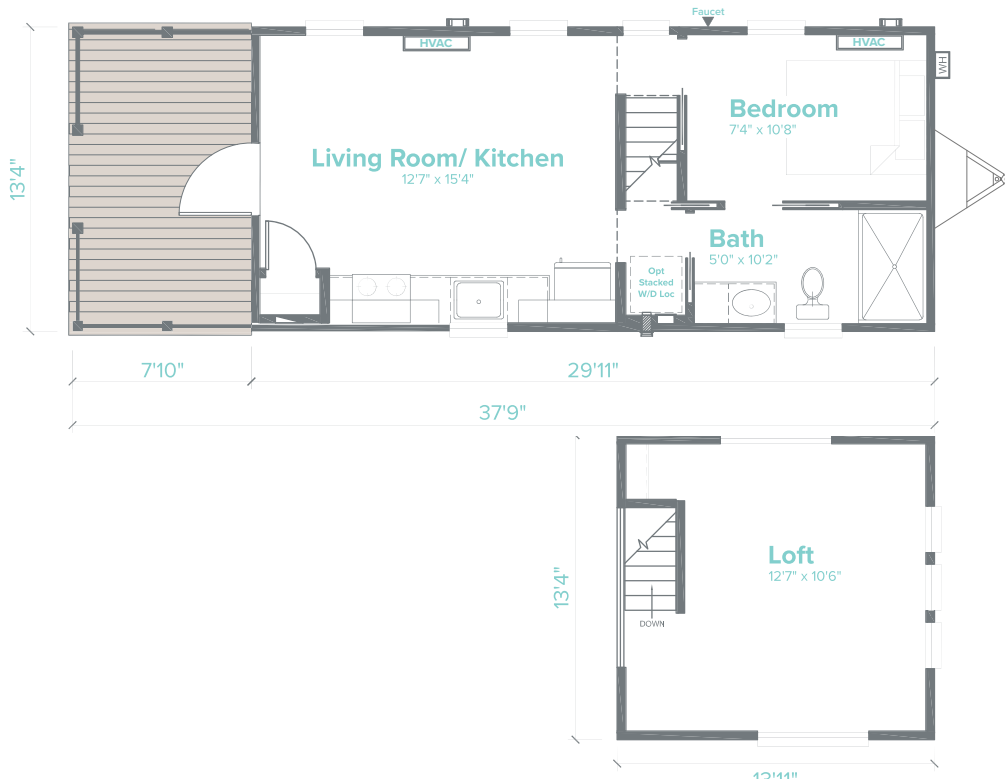
399 Sq Ft | 12x42 (with porch) | 





THE BERRY LS-102

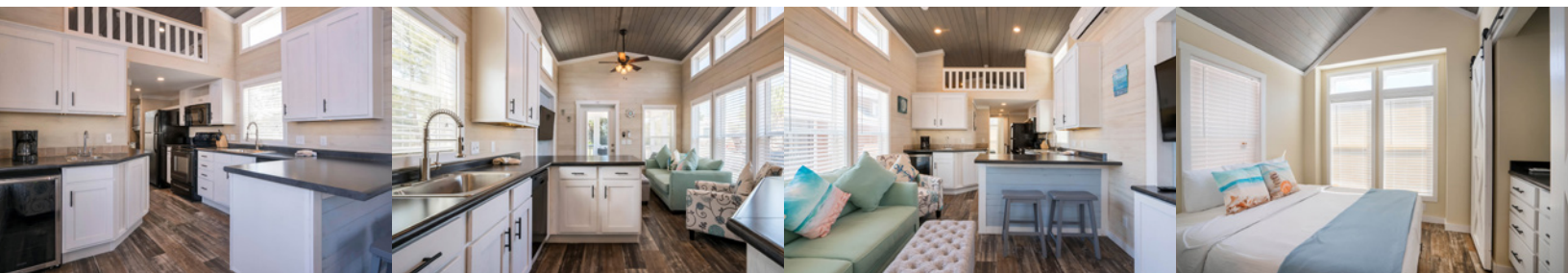
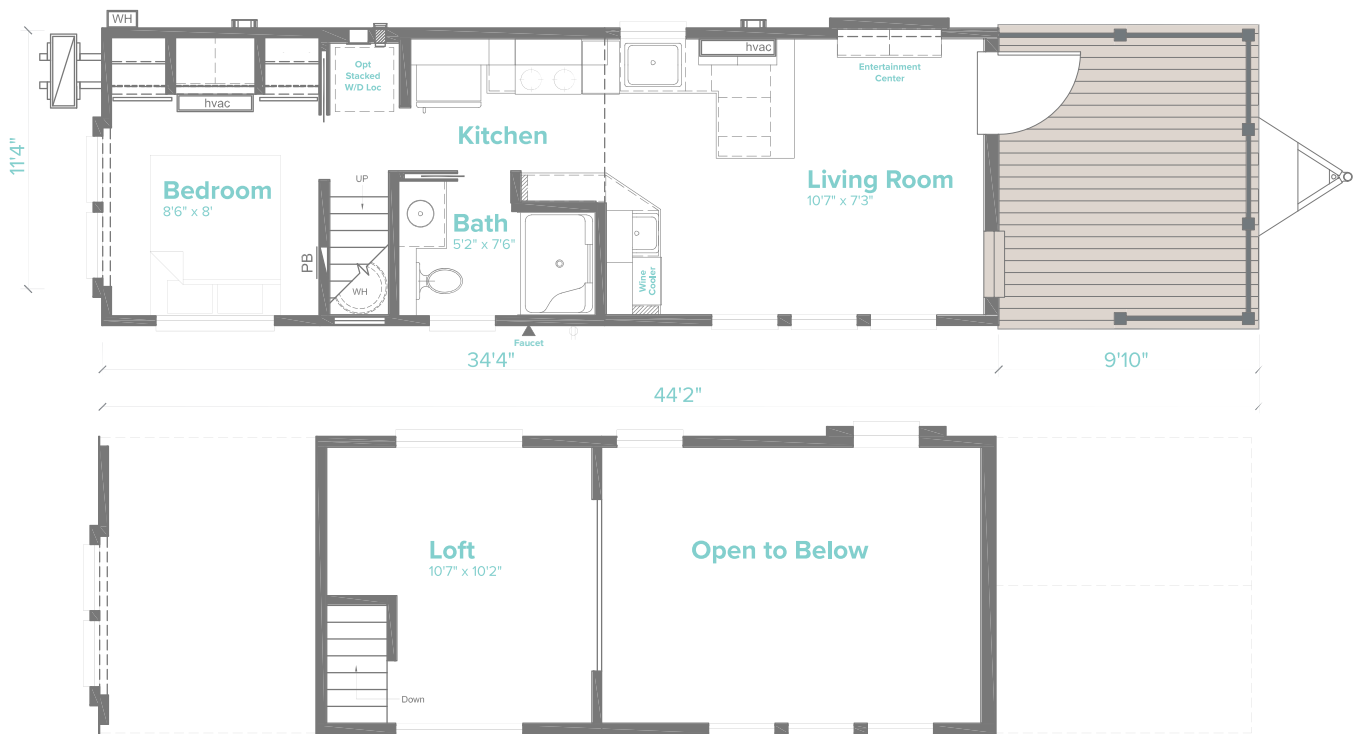
398 Sq Ft | 13x38 (with porch) | 





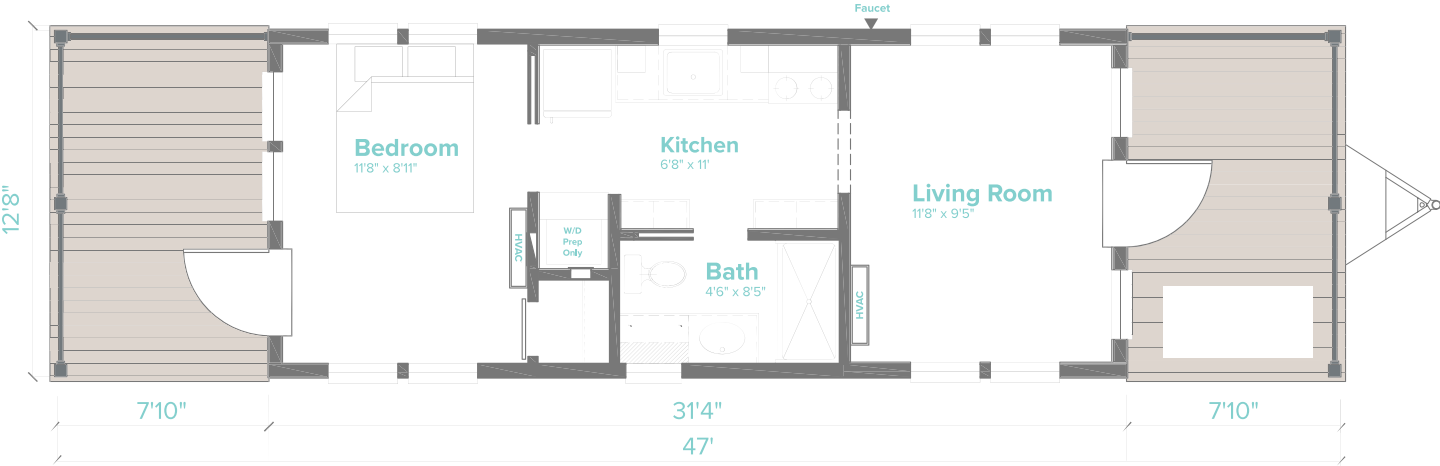
THE SEASHORE LS-103

395 Sq Ft | 12x45 (with porch) | 





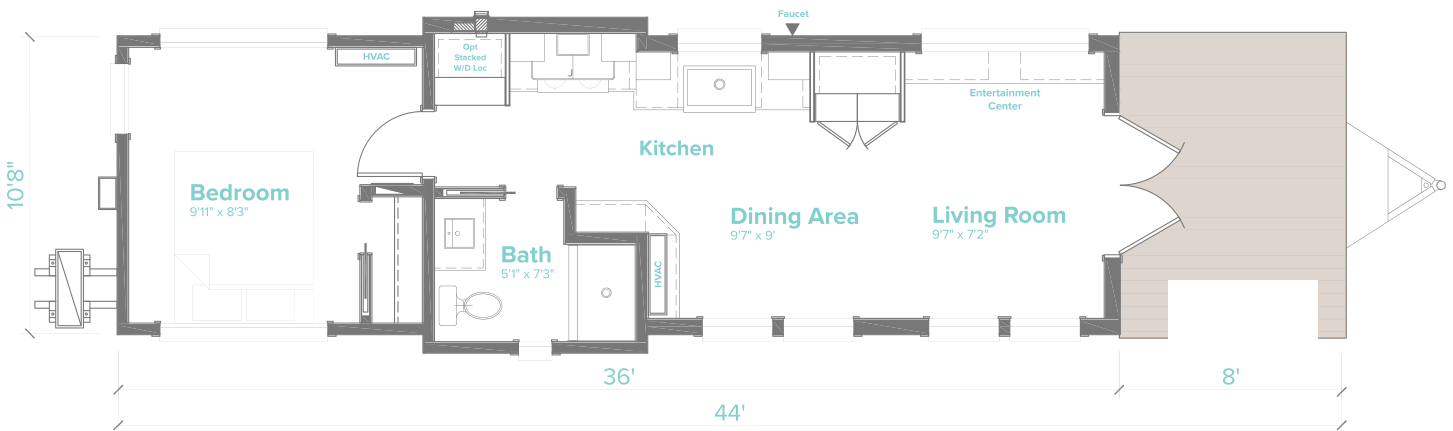
THE COLLINS LS-105
396 Sq Ft | 13x47 (with porches) | 





THE WEDGE LS-108

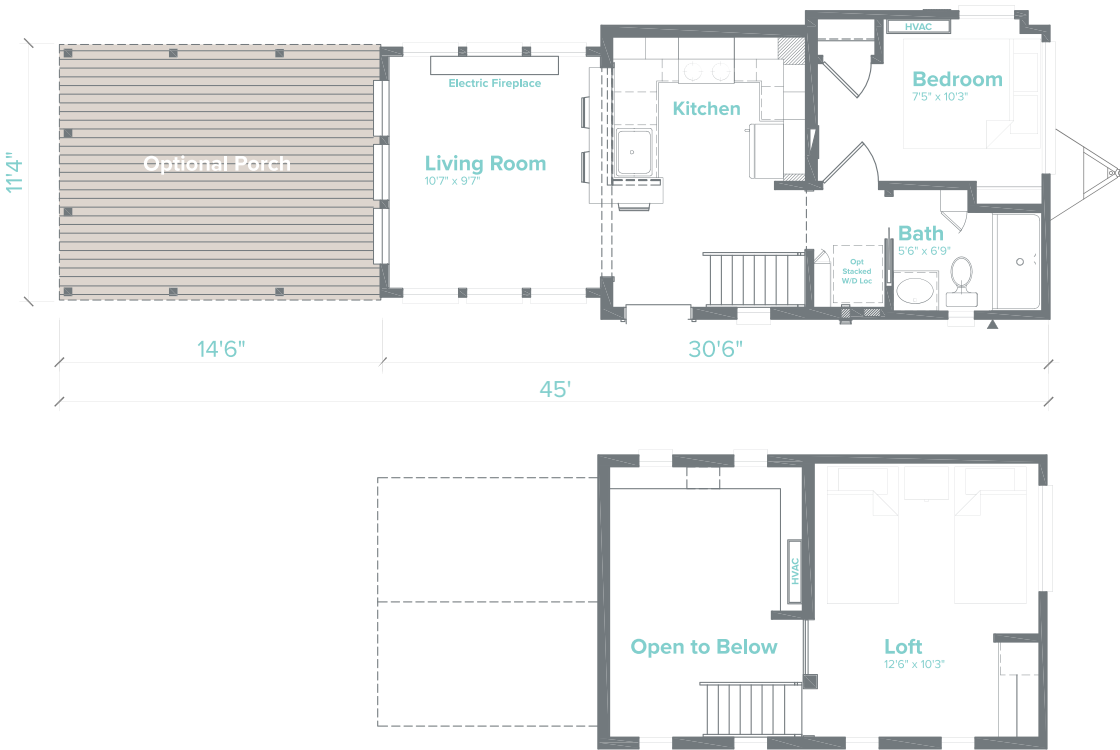
394 Sq Ft | 11x44 (with porch) | 





THE SEDONA LS-109

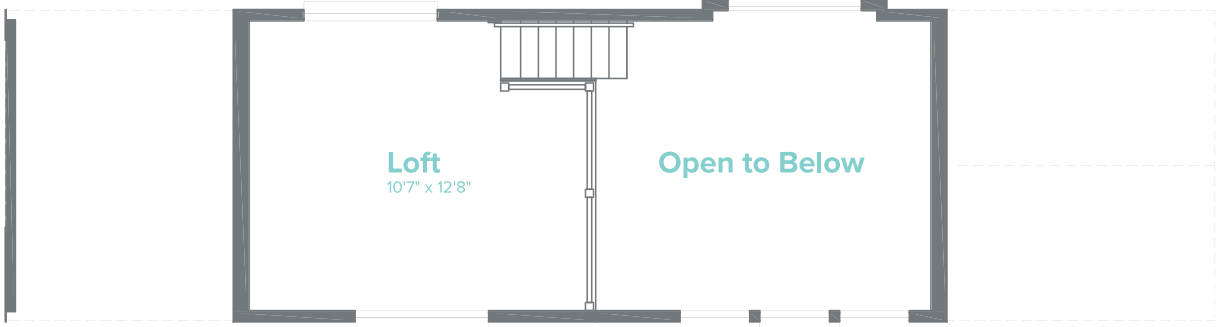
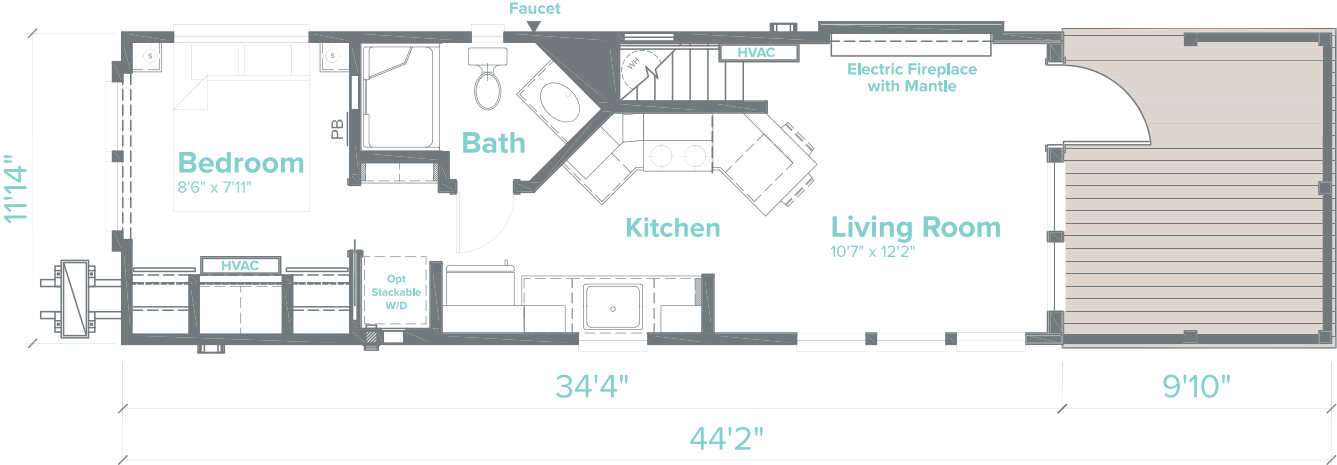
394 Sq Ft | 12x45 (with porch) | 





THE NEWELL LS-110

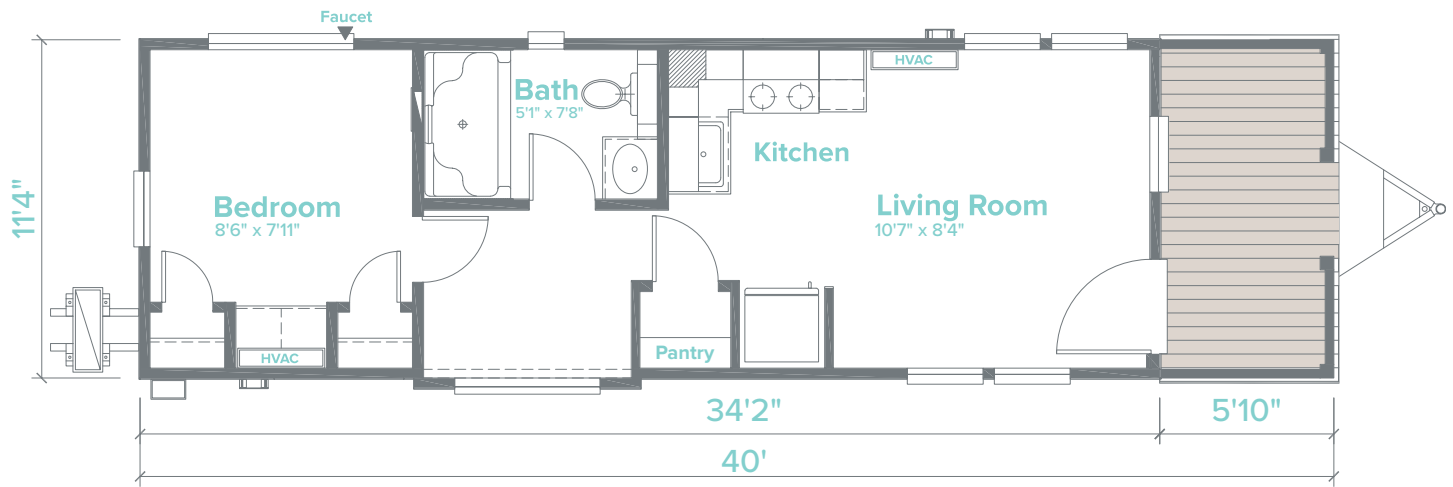
396 Sq Ft | 12x44 (with porch) | 





THE CYPRESS LS-115

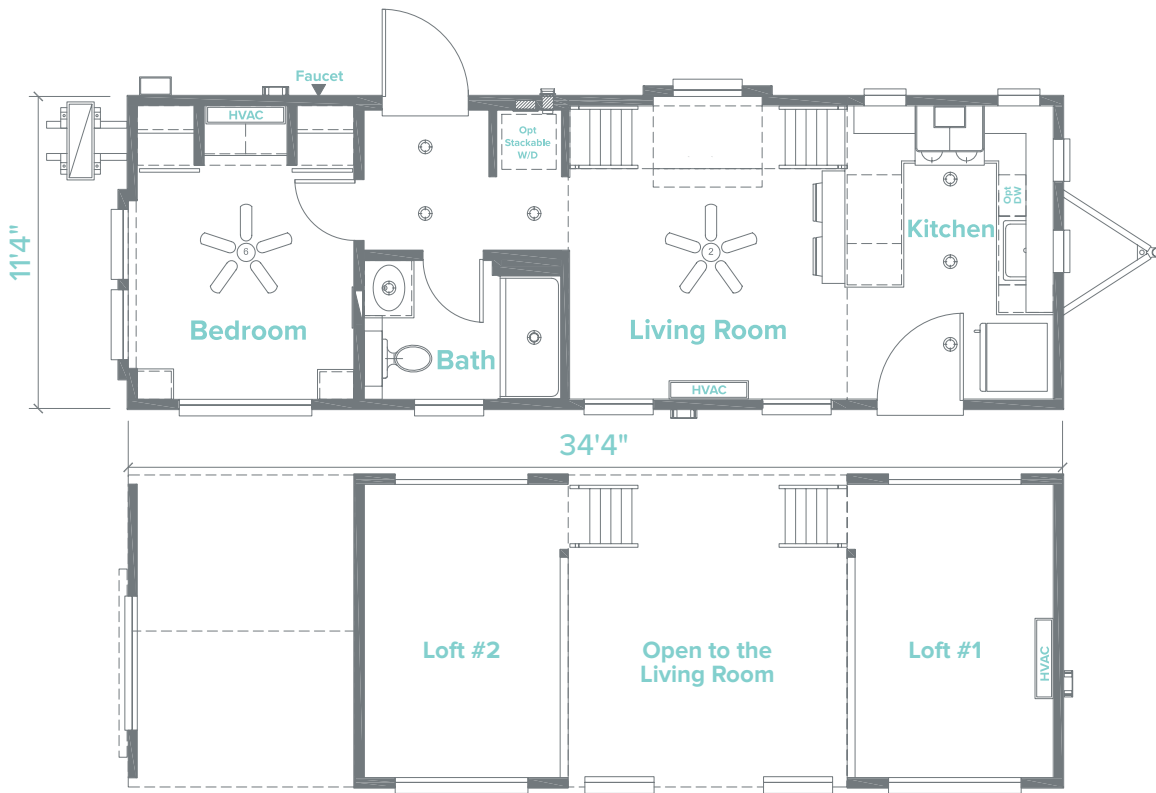
398 Sq Ft | 12' x 40' (with porch) | 






THE MAGNOLIA LS-114

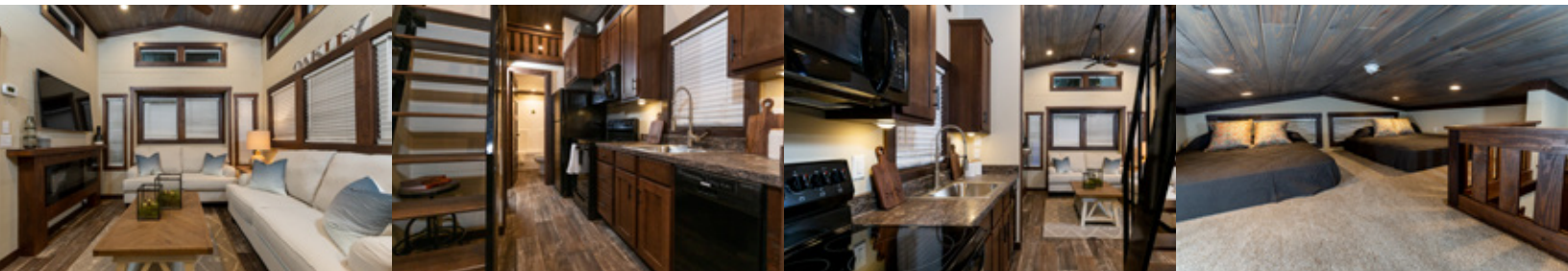
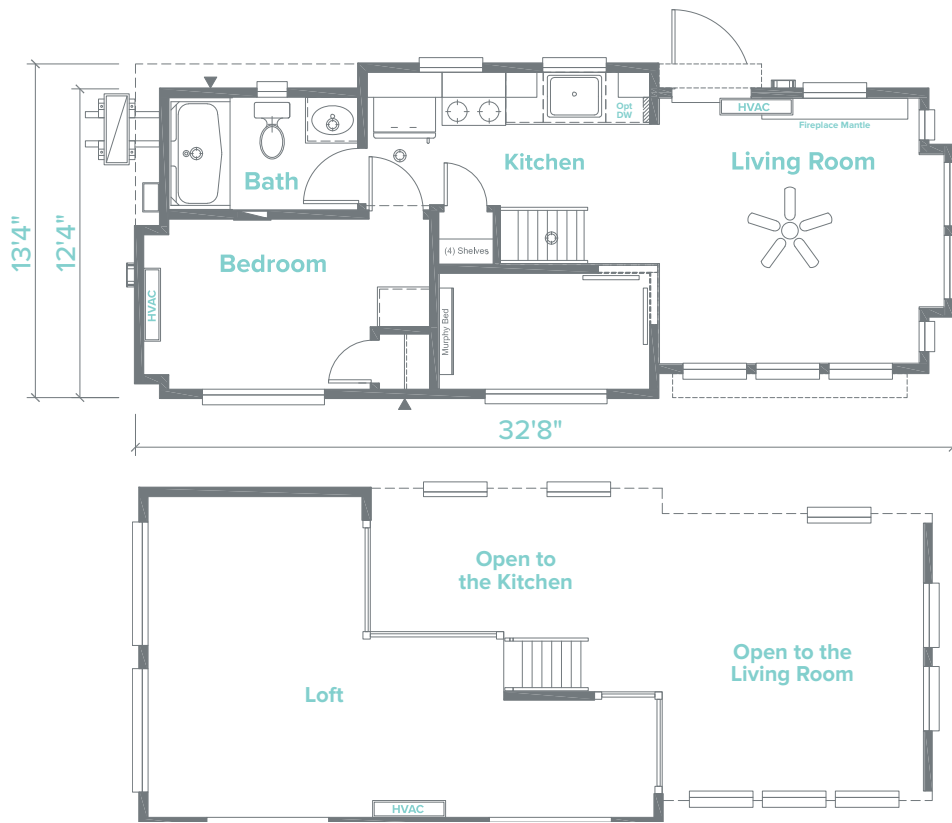
398 Sq Ft | 12' x 34' | 






THE OAKLEY LS-113

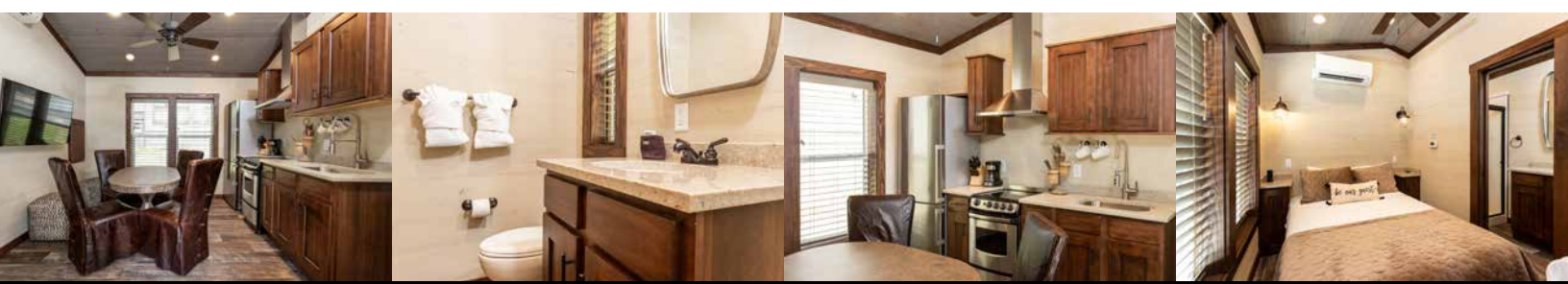
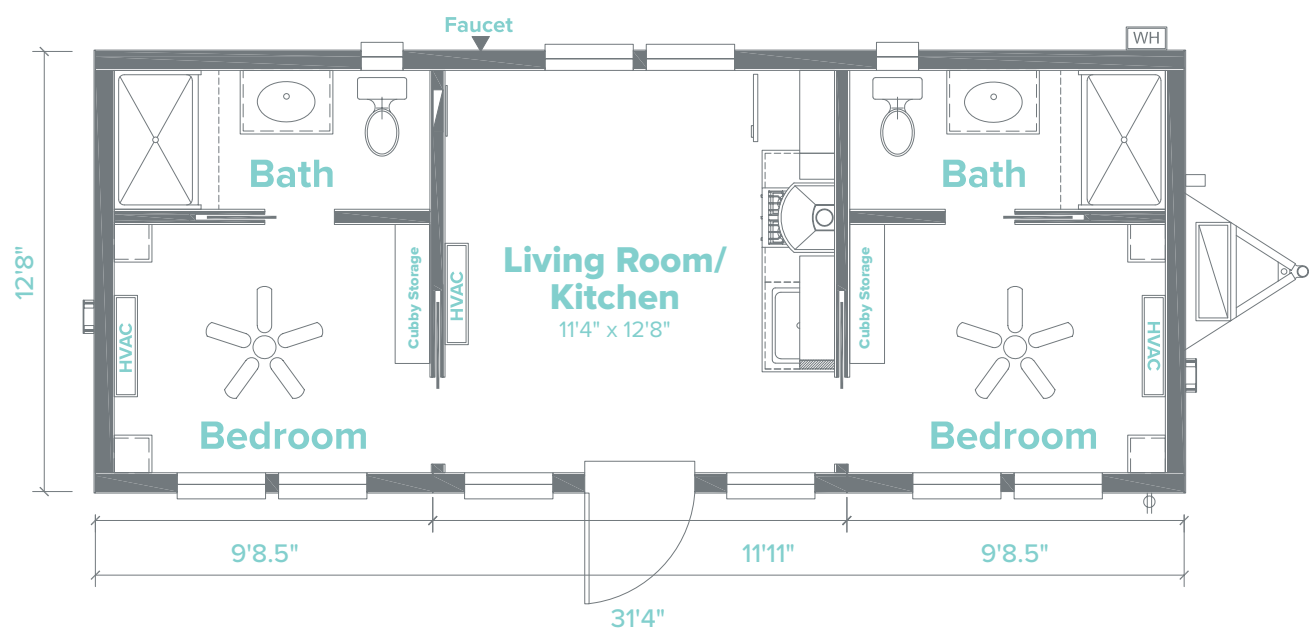
398 Sq Ft | 13' x 33' | 





THE TOWNSEND LS-111

396 Sq Ft | 13' x 32' | 



SHORE PARK

12' SERIES FLOOR PLANS

BRINGING AMERICA HOME * BRINGING AMERICA FUN

HOME

SHORE PARK IS WHERE YOU PARK IT BY SKYLINE

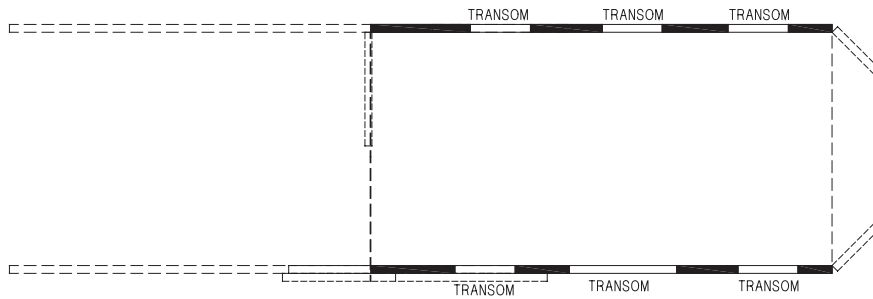
SINCE 1951

LEOLA, PENNSYLVANIA

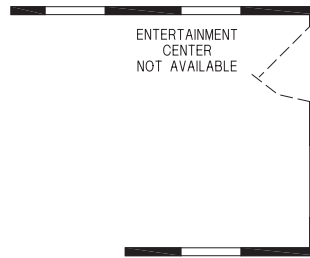
12' SERIES

Skyline is pleased to introduce the Shore Park series of park models. Ideal for campgrounds, retirement communities, or that perfect little spot by the lake, Shore Park features can include the a spacious residential bath, custom painted drywall interior, real wood trim and innovative ceiling finishes. Manufactured in Leola, Pennsylvania and backed by over 65 years of manufacturing experience, a 15-month warranty and stellar customer service, the only thing you have to worry about is where you're going to park them.





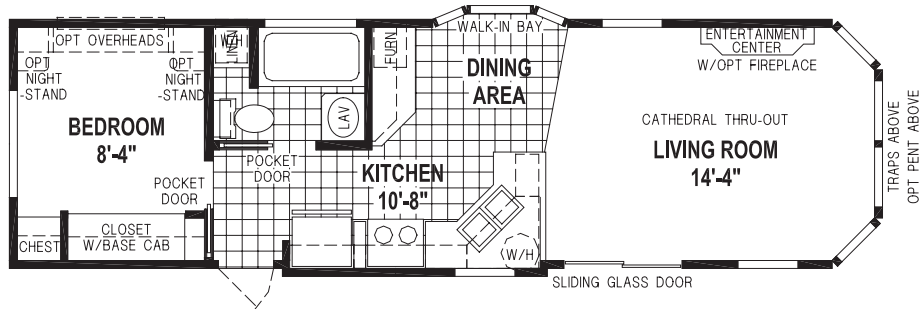
OPTION CLERESTORY



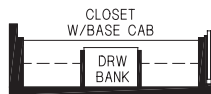
OPTION ENDWALL ENTRY



OPTION WATERFALL ENDWALL



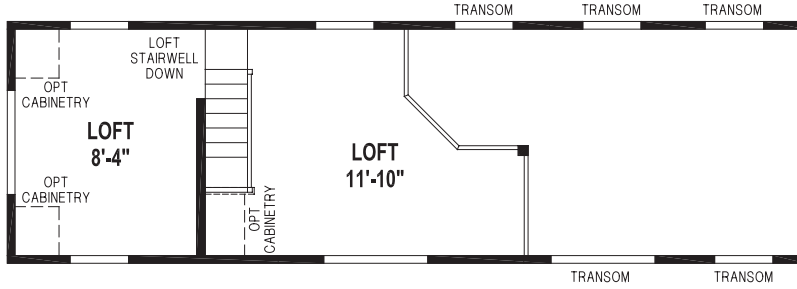
1934CTA/36'-10" 12 1BEDROOM - CATHEDRAL THRU-OUT



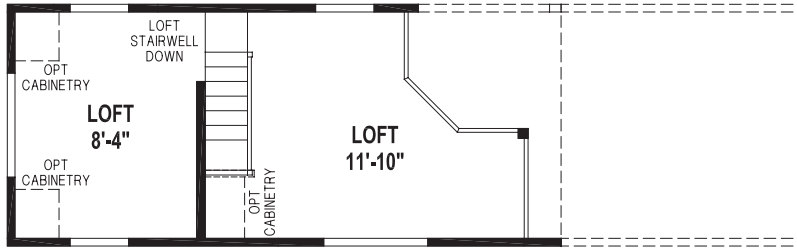
ALTERNATE WARDROBE

*** (NEW ENGLAND SERIES)**

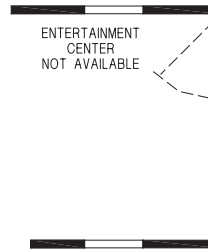
12' SERIES



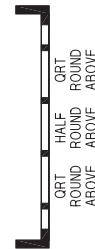
LOFT STORAGE AREA/OPTION CLERESTORY



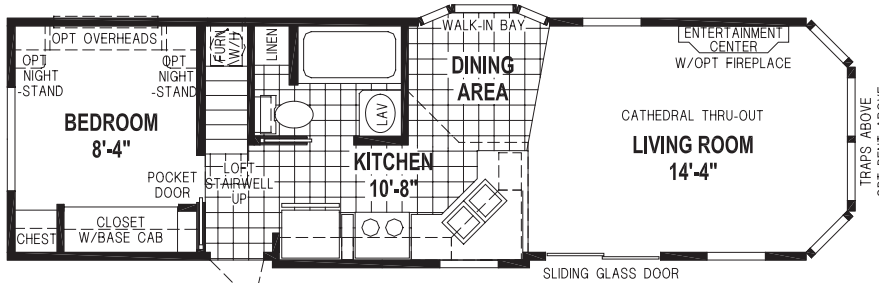
LOFT STORAGE AREA



OPTION ENDWALL ENTRY

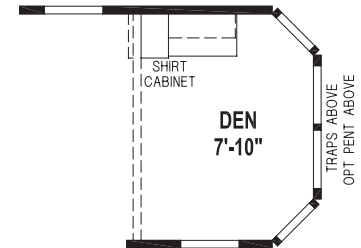


OPTION WATERFALL ENDWALL

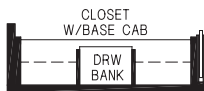


1934CTP/36'-10"12 1BEDROOM - CATHEDRAL THRU-OUT

*** 1934CTM/36'-10"12**

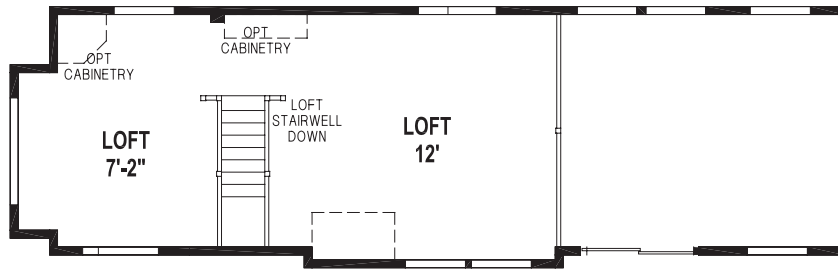


OPTION DEN

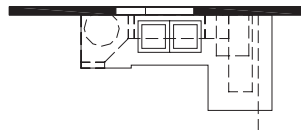


ALTERNATE WARDROBE

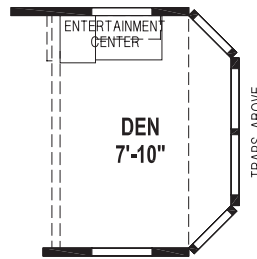
*** (NEW ENGLAND SERIES)**



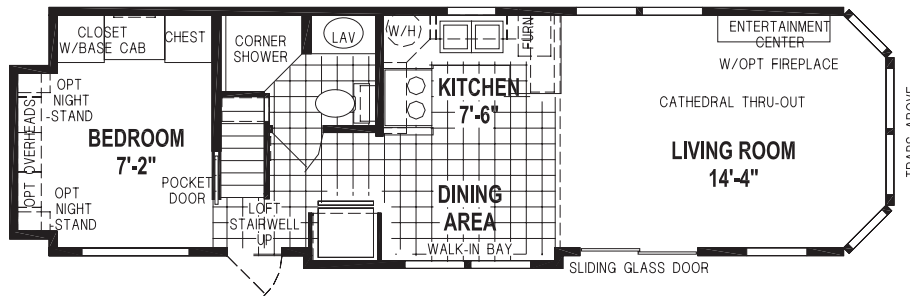
LOFT STORAGE AREA



OPTION SNACK BAR OVERHANG



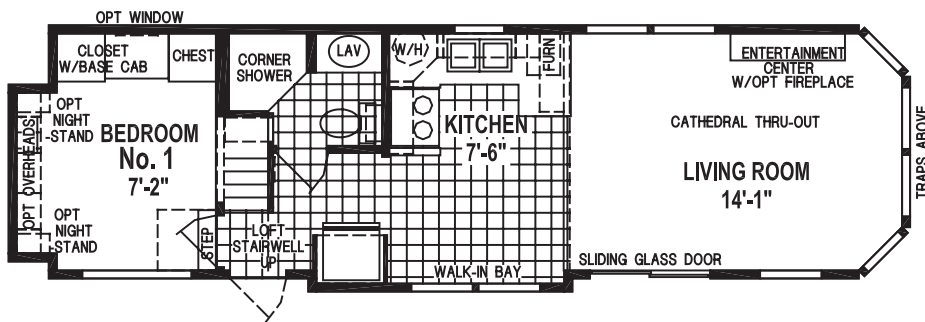
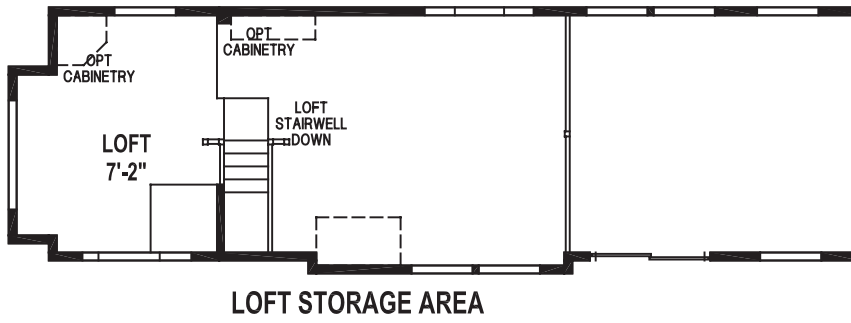
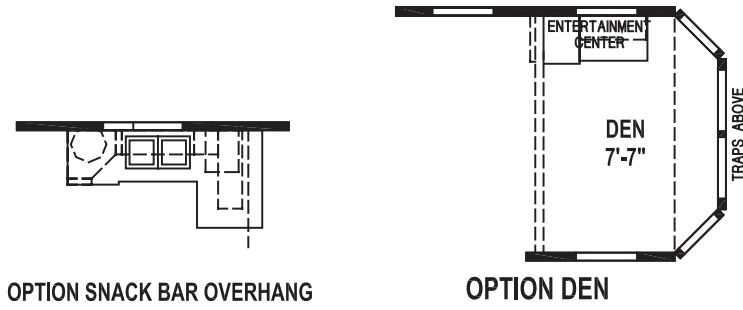
OPTION DEN

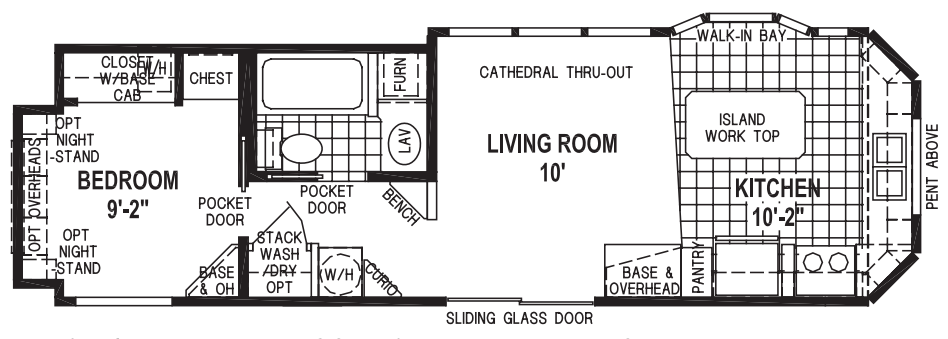
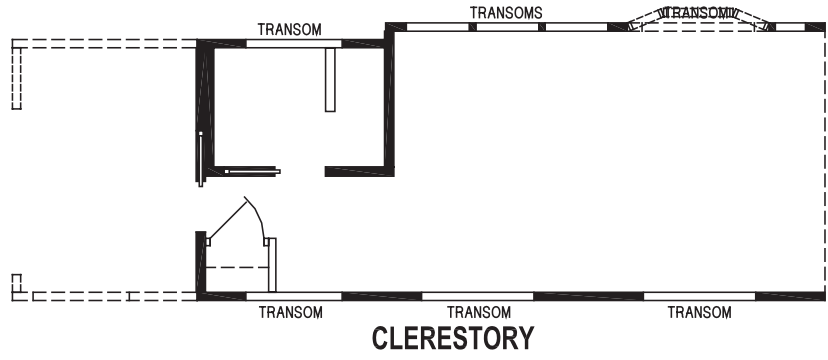


1935CTP/3612 1BEDROOM - CATHEDRAL THRU-OUT



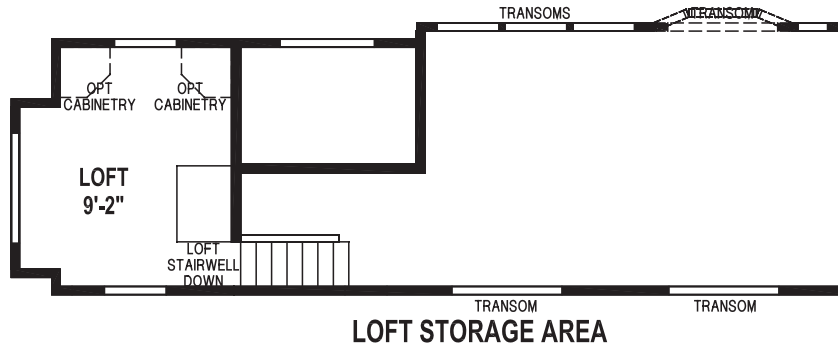
All Skyline park models are covered by our no-nonsense 15-month warranty, the very best in the industry. It's our way of showing our customers how much we believe in the quality we build into every Skyline park model. Our warranty gives new park model owners the assurance that comes from working with a company with more than six decades of building.





1941CTB/34'-10"12 1BEDROOM - CATHEDRAL THRU-OUT
 * 1941CTA/34'-10"12

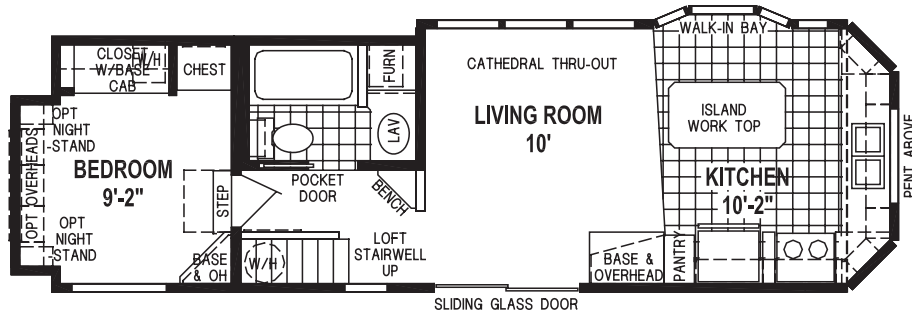
*(NEW ENGLAND SERIES)



LOFT STORAGE AREA

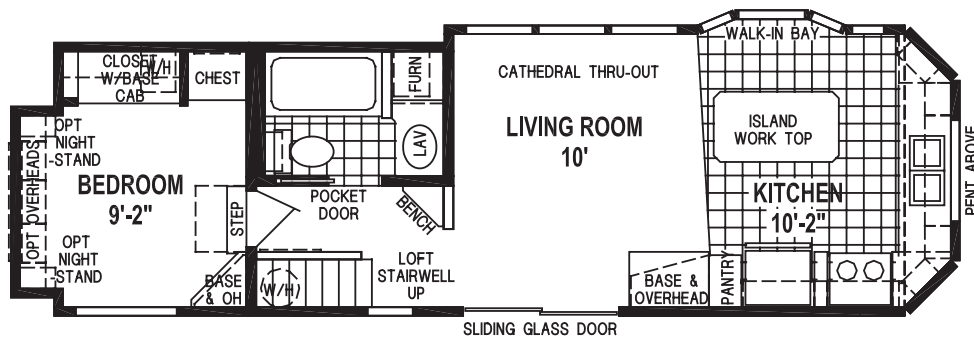
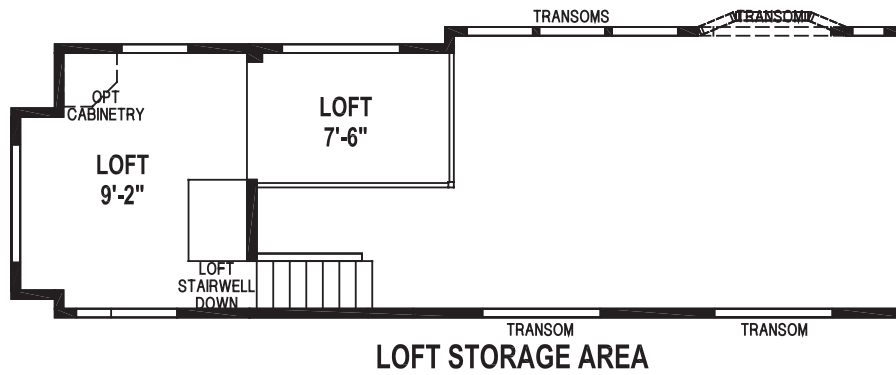


OPTION FIREPLACE



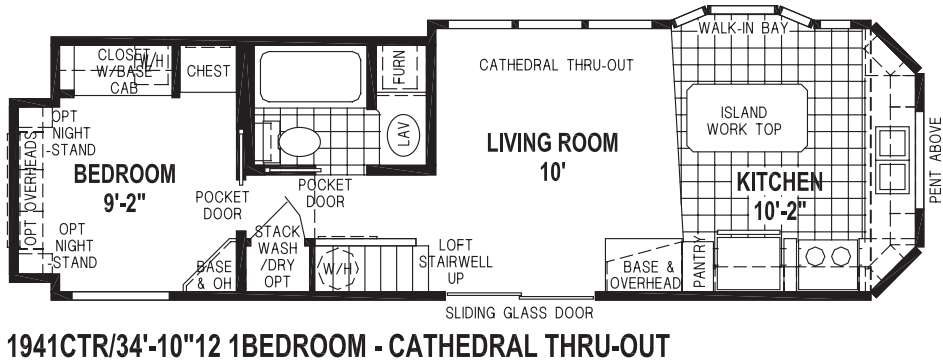
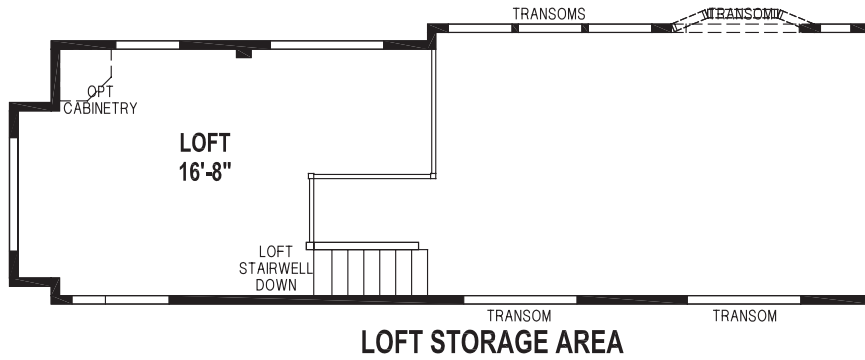
1941CTP/34'-10"12 1BEDROOM - DROP LOFT - CATHEDRAL THRU-OUT
***1941CTM/34'-10"12**

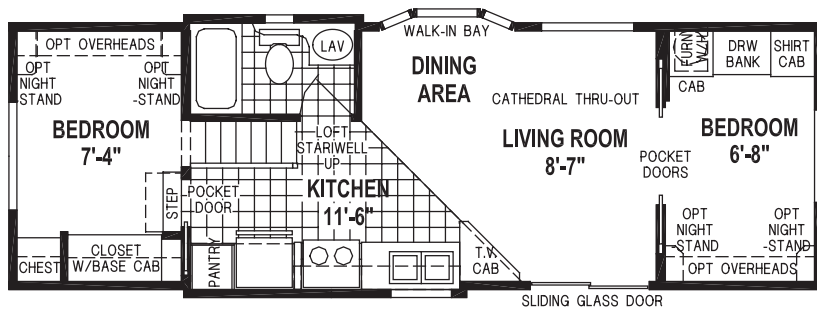
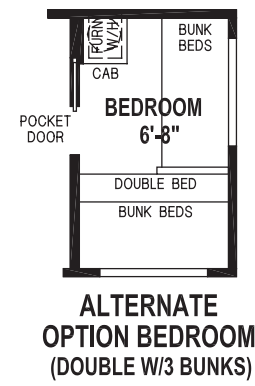
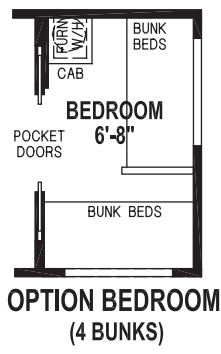
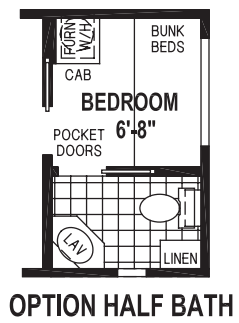
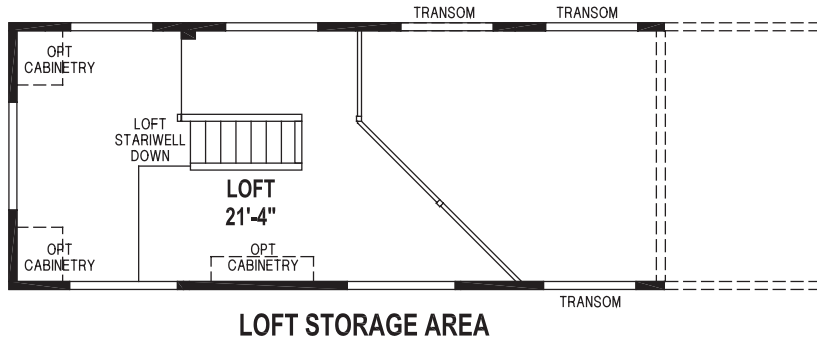
*** (NEW ENGLAND SERIES)**



1941CTQ/34'-10"12 1BEDROOM - DROP LOFT - CATHEDRAL THRU-OUT
 *1941CTN/34'-10"12

*(NEW ENGLAND SERIES)

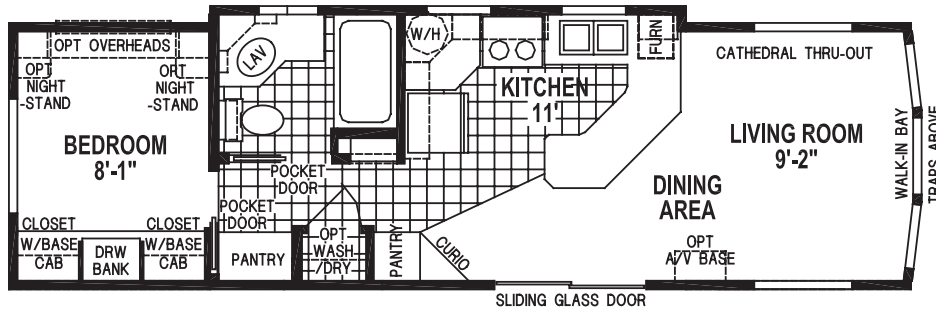
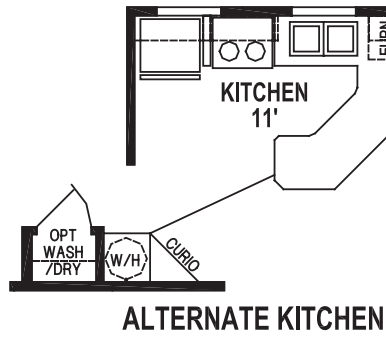
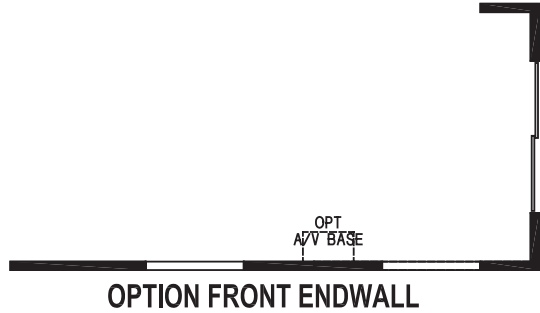
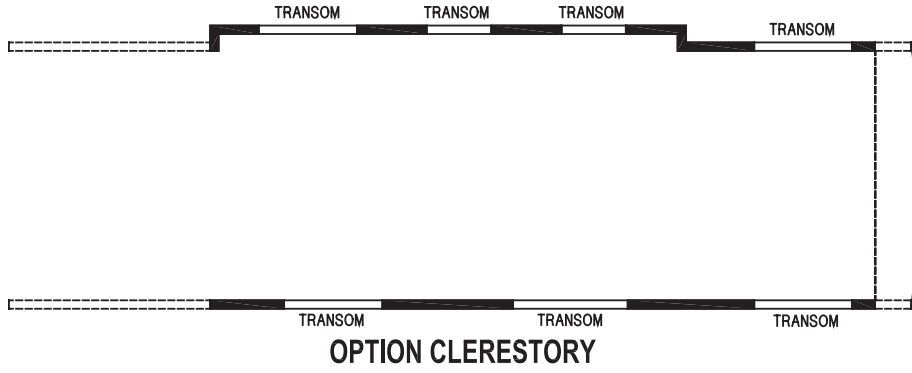




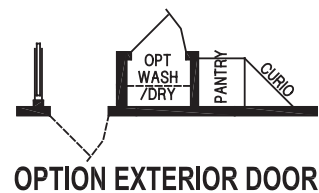
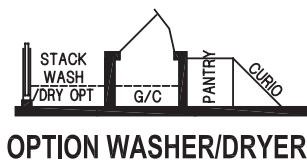
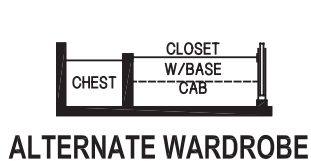
**1943CTP/34'-1"12 2BEDROOM - DROP LOFT - CATHEDRAL THRU-OUT
(NOT AVAILABLE WITH HOLDING TANKS)**
***1943CTM/34'-1"12**

*** (NEW ENGLAND SERIES)**

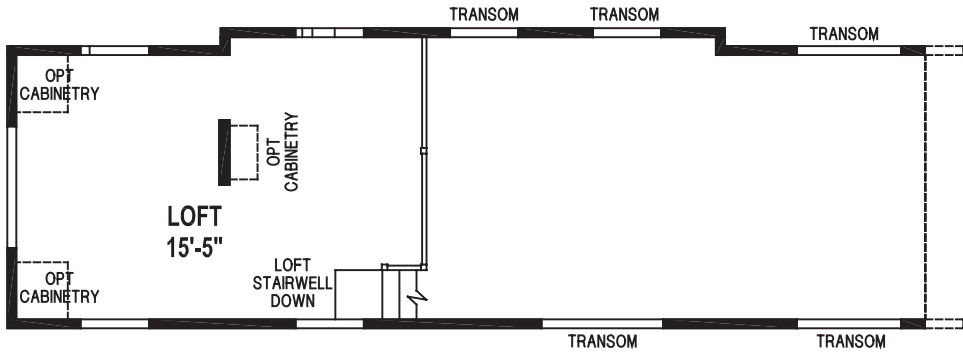
12' SERIES



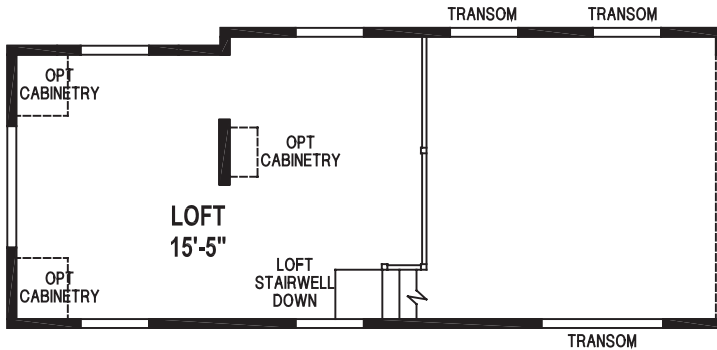
1946CTB/35'-7"12 1BEDROOM - CATHEDRAL THRU-OUT
*1946CTA/35'-7"12



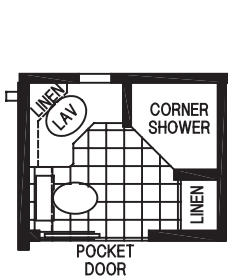
*(NEW ENGLAND SERIES)



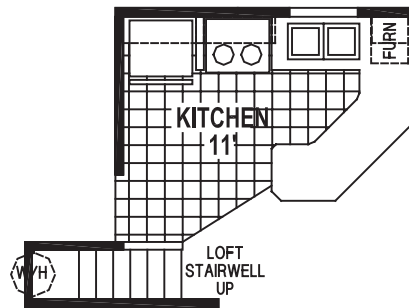
OPTION LOFT STORAGE AREA/CLERESTORY



LOFT STORAGE AREA



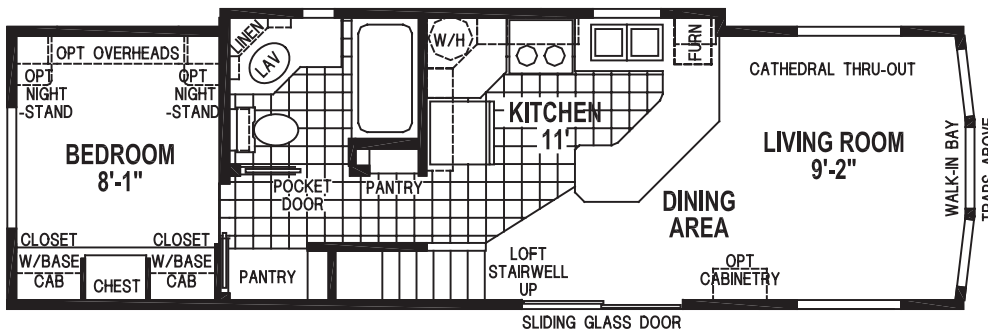
OPTION CORNER SHOWER BATH



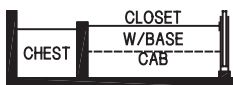
OPTION KITCHEN



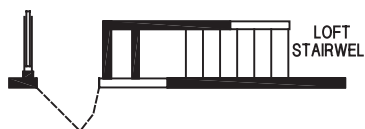
OPTION ENTERTAINMENT CENTER



1946CTP/35'-7"12 1BEDROOM - CATHEDRAL THRU-OUT
*** 1946CTN/35'-7"12**



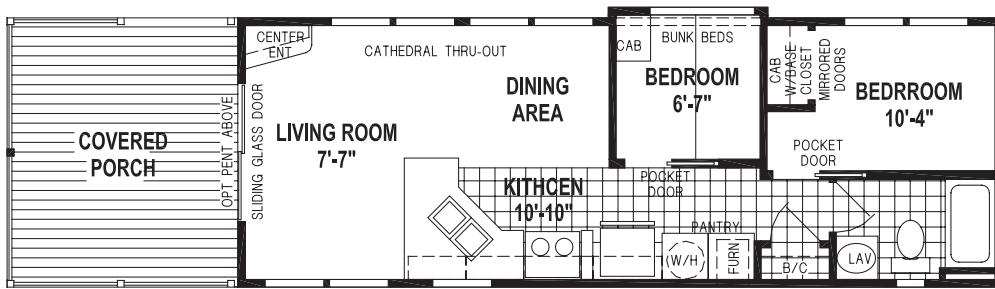
ALTERNATE WARDROBE



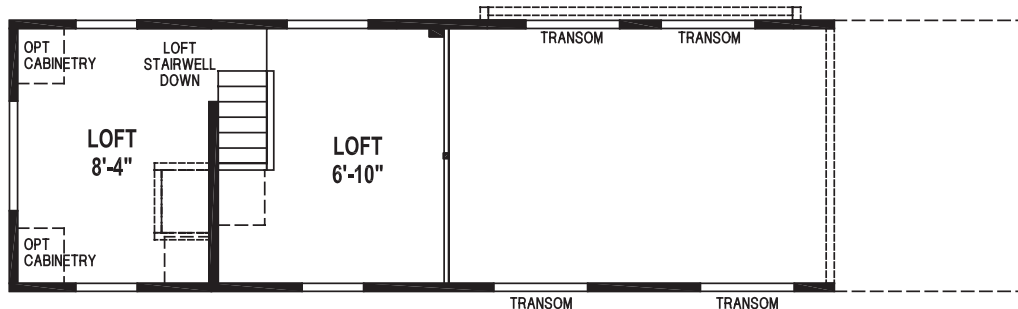
OPTION EXTERIOR DOOR
*** (NEW ENGLAND SERIES)**



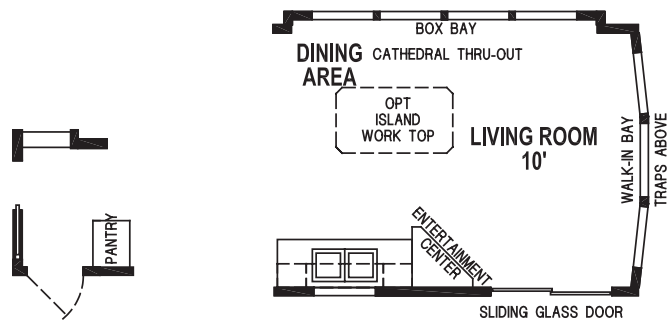
OPTION WASHER/DRYER



1949CTC/43'-212 2BEDROOM - CATHEDRAL THRU-OUT

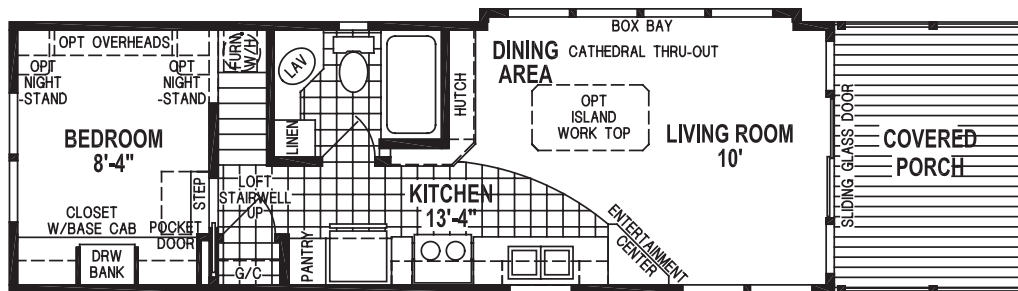


LOFT STORAGE AREA



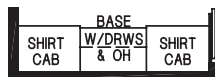
OPTION EXTERIOR DOOR

OPTION PORCH DELETE



1956CTP/4212 1BEDROOM - DROP LOFT - CATHEDRAL THRU-OUT

***1956CTM/4212 (NOT AVAILABLE WITH HOLDING TANKS)**



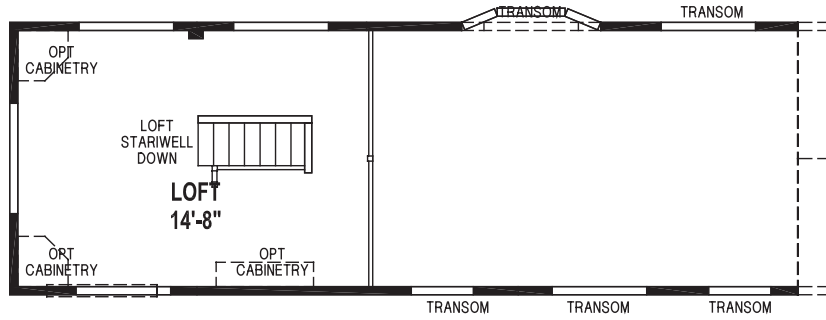
ALTERNATE SHIRT CLOSET

*** (NEW ENGLAND SERIES)**

12' SERIES



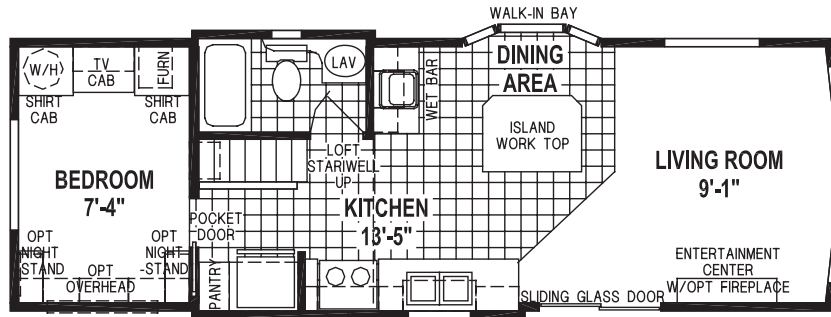




LOFT STORAGE AREA



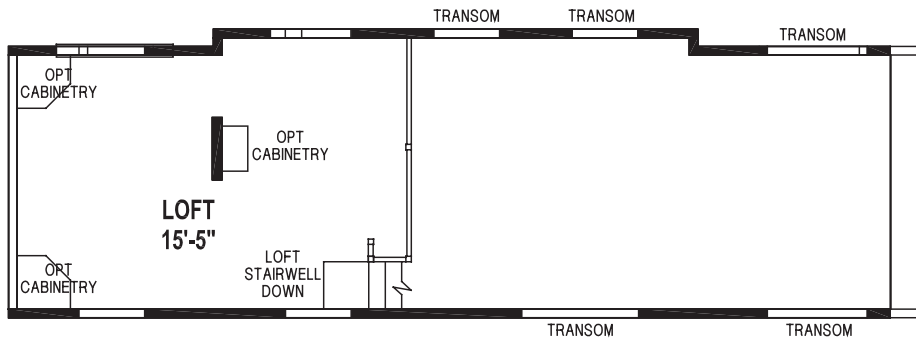
OPTION ENTRY



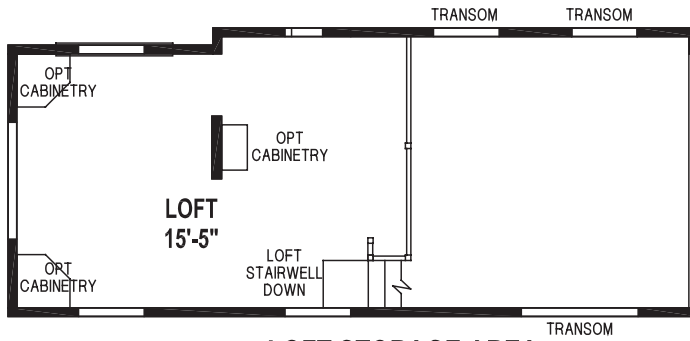
1963CTP/33'-9"12 1BEDROOM

*** 1963CTM/33'-9"12**

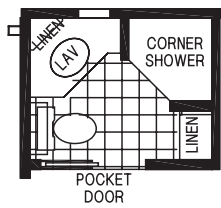
*** (NEW ENGLAND SERIES)**



OPTION LOFT STORAGE AREA/CLERESTORY



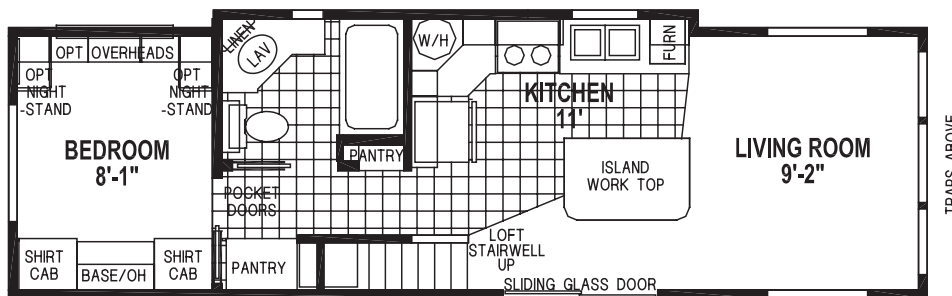
LOFT STORAGE AREA



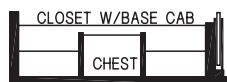
OPTION CORNER SHOWER BATH



OPTION ENTERTAINMENT CENTER



1964CTP/35'-7"12 1BEDROOM
***1964CTM/35'-7"12**



OPTION WARDROBE



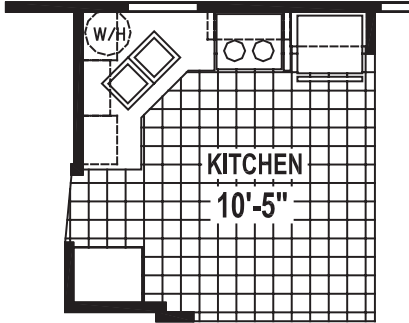
OPTION WASHER/DRYER



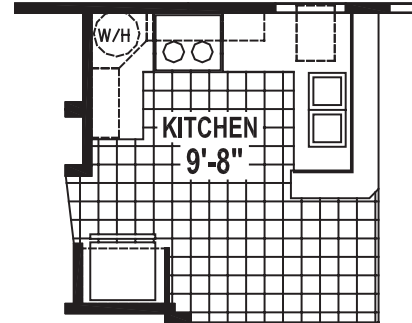
OPTION EXTERIOR DOOR

*** (NEW ENGLAND SERIES)**

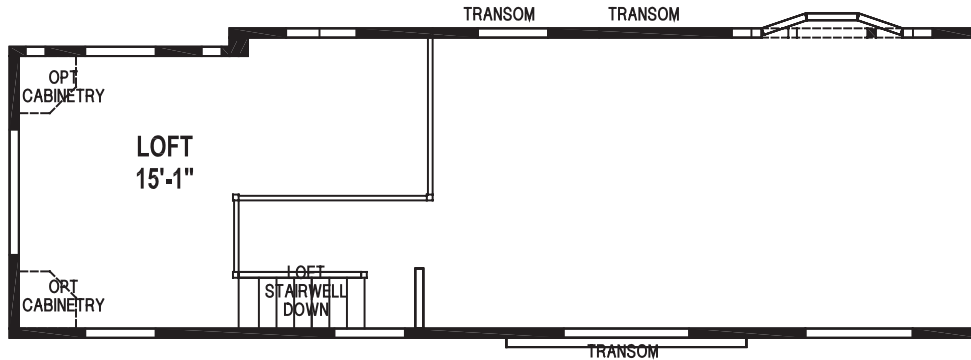
12' SERIES



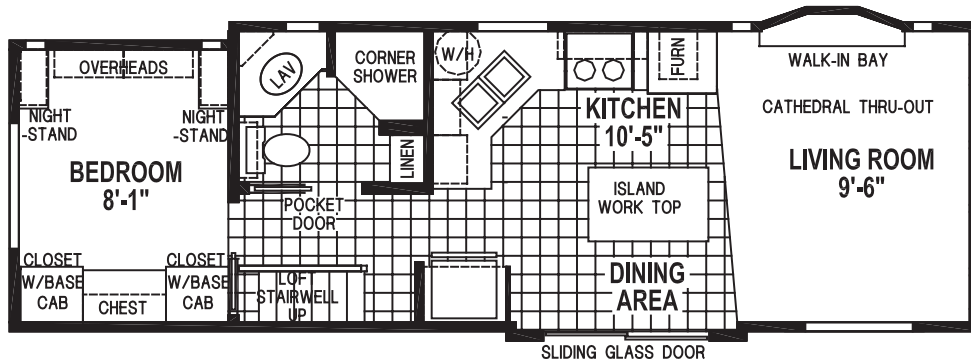
OPTION KITCHEN



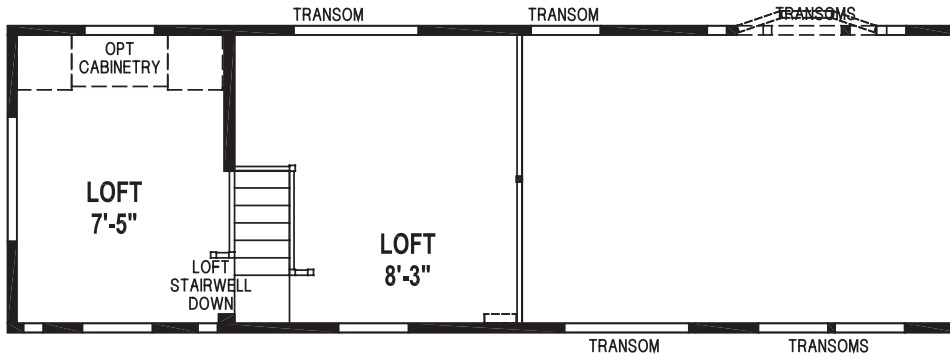
OPTION SNACK BAR KITCHEN



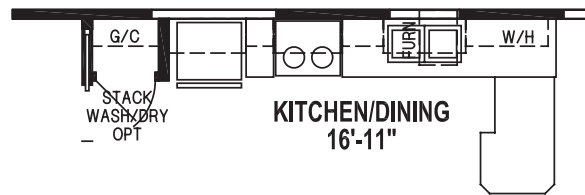
LOFT STORAGE AREA



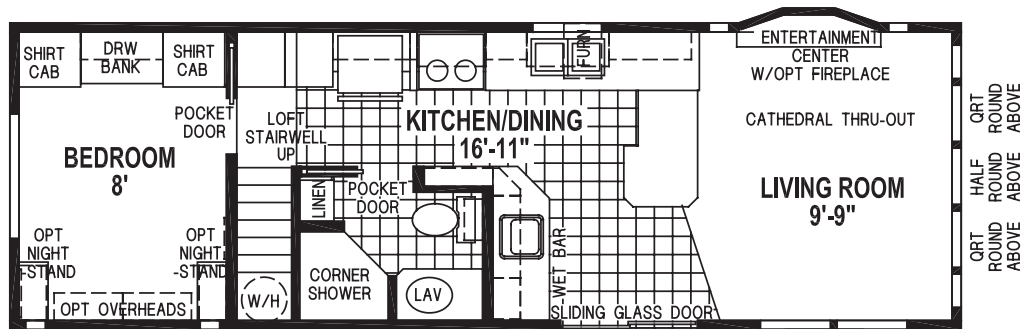
1966TP/3512 - 1BEDROOM - CATHEDRAL THRU-OUT



LOFT STORAGE AREA



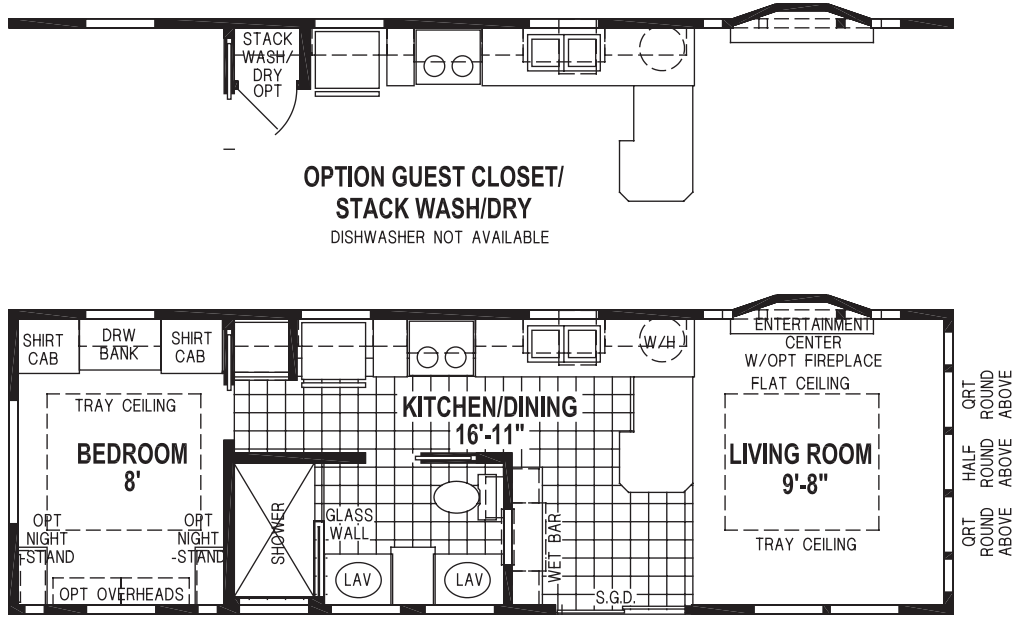
OPTION GUEST CLOSET



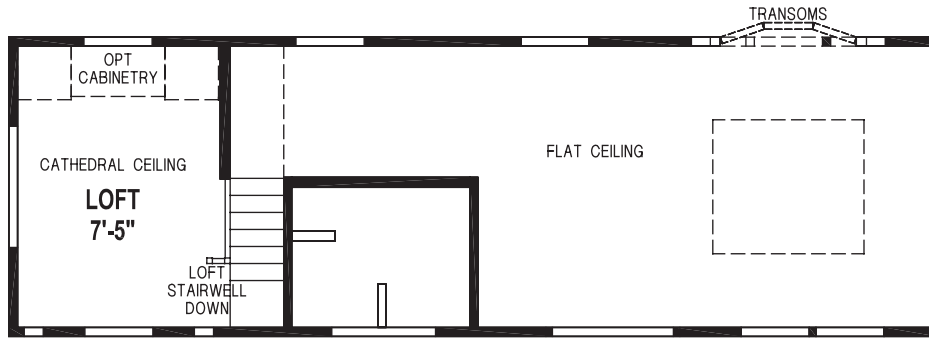
1967CTP/3512 1BEDROOM - DROP LOFT - CATHEDRAL THRU-OUT
***1967CTM/3512**

***(NEW ENGLAND SERIES)**

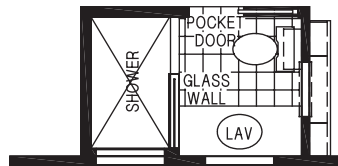
12' SERIES



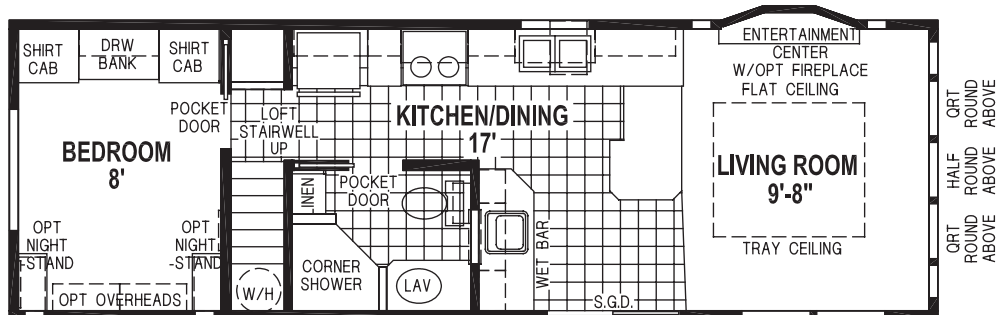
1969CTA/3512 1BEDROOM



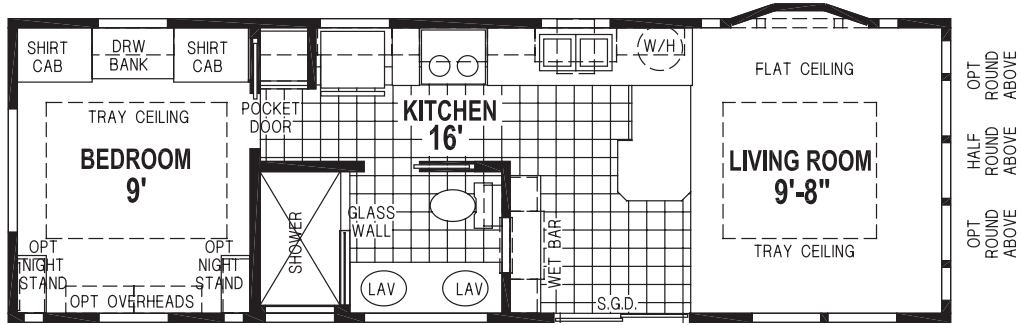
LOFT STORAGE AREA



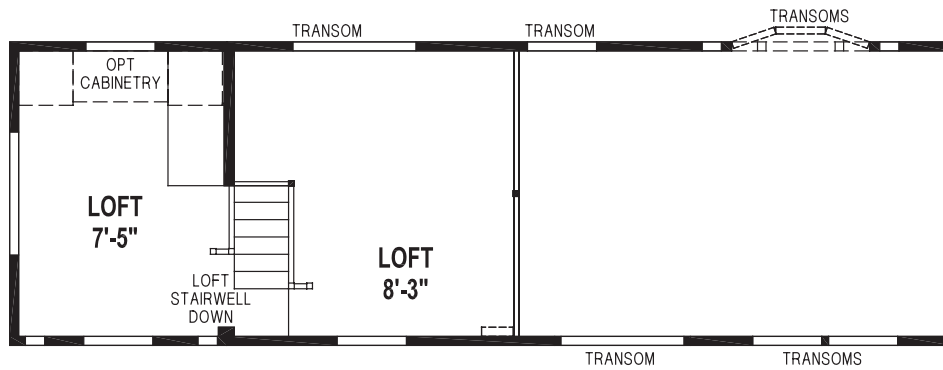
OPTION BATH



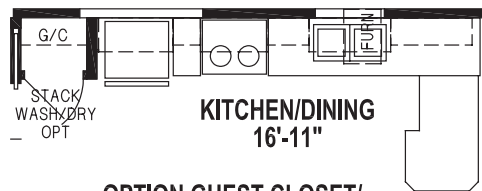
1969CTP/3512 1BEDROOM



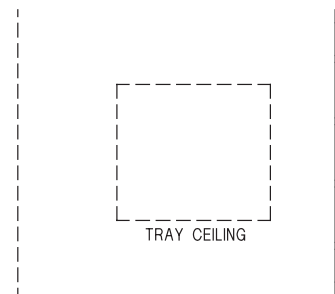
1970CTA/3512 1BEDROOM



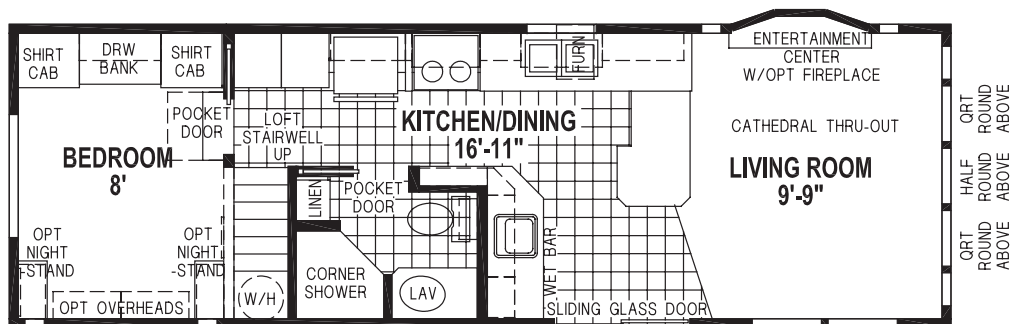
LOFT STORAGE AREA



**OPTION GUEST CLOSET/
STACK WASH & DRY**

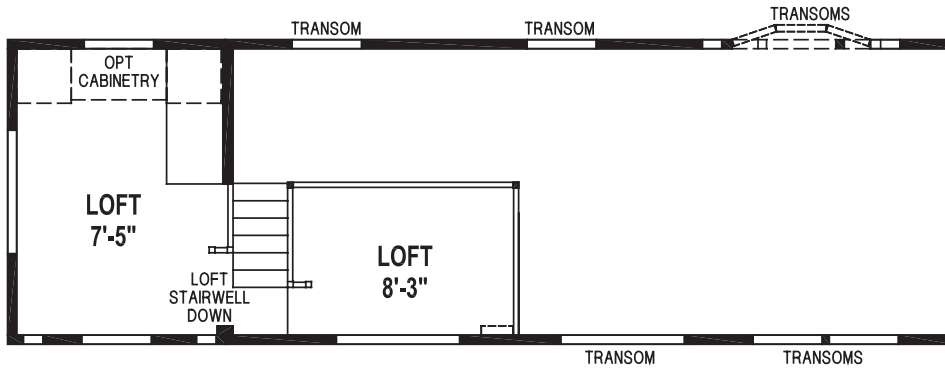


OPTION TRAY CEILING
ONLY AVAILABLE W/FLAT CEILING OPTION

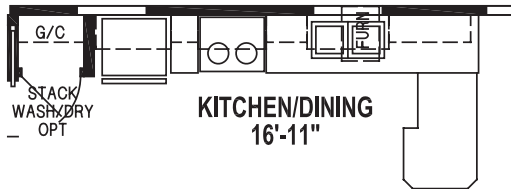


1971CTP/3512 1BEDROOM - DROP LOFT - CATHEDRAL THRU-OUT
***1971CTM/3512**

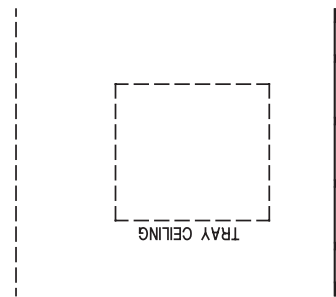
***(NEW ENGLAND SERIES)**



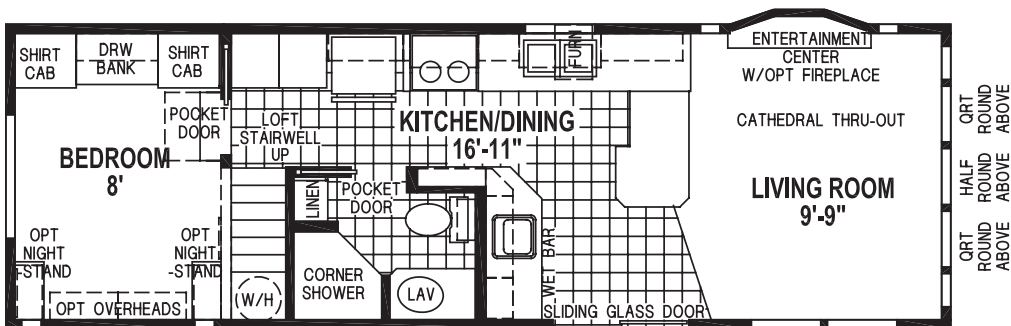
LOFT STORAGE AREA



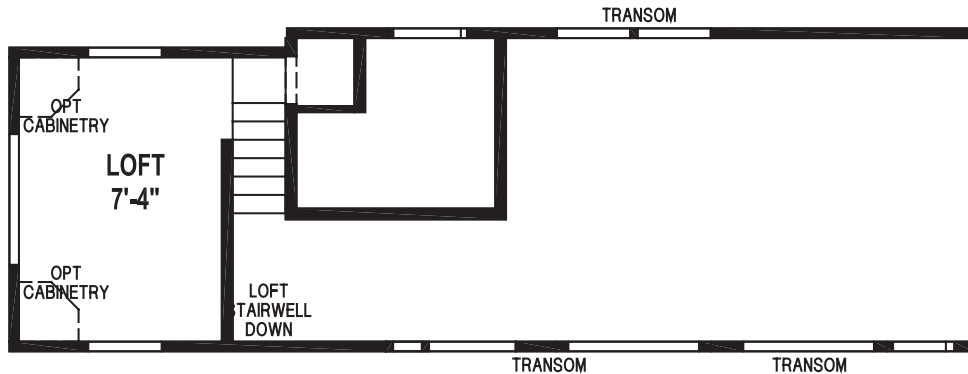
OPTION GUEST CLOSET/
STACK WASH/ DRY



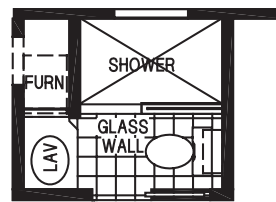
OPTION TRAY CEILING
ONLY AVAILABLE W/FLAT CEILING OPTION



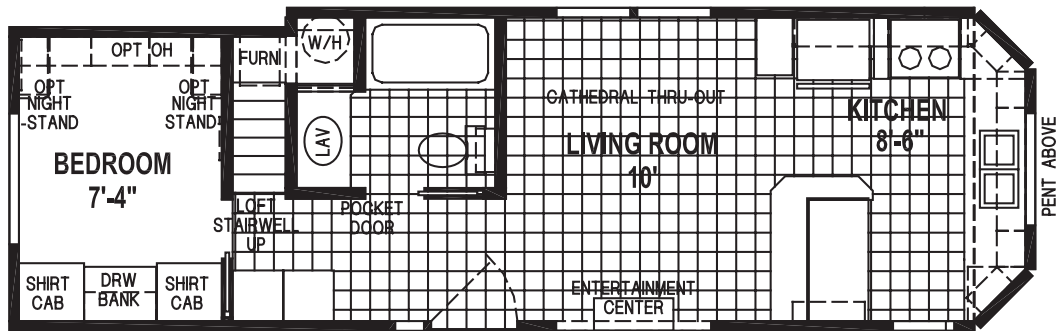
1971CTQ/3512 1BEDROOM - DROP LOFT - CATHEDRAL THRU-OUT



LOFT STORAGE AREA



OPTION SHOWER BATH



1972CTP/35'-6"12 1BEDROOM - CATHEDRAL THRU-OUT

12' SERIES



Visit our website to learn more!
www.skylinepm.com

SHORE PARK

12' SERIES PARK MODELS STANDARD FEATURES

LIVING AREAS

- Upgrade Carpet
- Valance with 1-½" Blinds
- Large 3-½" Cove at Ceiling
- Phone Jack (2)
- TV Jack (2)
- Chandelier Dining Light
- 52" Paddle Fan

KITCHEN

- Flat Panel Cabinetry Available in Two Styles
 - Flat Panel Hardwood Espresso Oak Doors and Face Frames
 - Maple Hardwood Doors and Face Frames
 - White and Gray Vacuum-Pressed Doors and ¾" White and Gray Face Frames
- Drawer Over Door Base Cabinet Construction
- Box Built Cabinets with Adjustable Shelves and O.H. Bottom Light Rail
- Two Shelves in Base Cabinet
- Stainless Steel Sink
- Single Lever Faucet at Sink with Sprayer
- 16 Cu. Ft. Double Door Frost-Free Refrigerator
- 30" Deluxe Gas Range with Spacesaver Microwave Range Hood
- Valance with 1-½" Blinds
- Large Cove Above Cabinets
- Cabinet Above Refrigerator
- Deluxe Cabinet and Drawer Pulls
- 6" Ceramic Tile Backsplash

BATHROOM

- Flat Panel Cabinetry Available in Three Styles
 - Flat Panel Hardwood Espresso Oak Doors and Face Frames
 - Maple Hardwood Doors and Face Frames
 - White and Gray Vacuum-Pressed Doors and ¾" White and Gray Face Frames
- 6" Ceramic Backsplash at Lav
- Fiberglass Tub with Full Surround (most models)
- Single Lever Faucet at Lav
- Privacy Locks
- Towel Bar and Paper Holder
- Power Vent Fan with Light – Fan Only at Loft Models
- Elongated China Commodes
- China Sink with Overflow and Pop-Up Drain

BEDROOM

- Upgrade Carpet
- Drapes with 1-½" Blinds
- Mirrored Wardrobe Doors with Drawers Below
- Ventilated Wire Shelving
- TV Jack

ADDITIONAL FEATURES

- ANSI 119.5 Approved
- Cathedral Ceiling or Flat Ceiling (per floor plan)
- Wire for Paddle Fan
- Shingle Roof with Ridge Cap
- 25-Year Shingles
- Vinyl Lap Siding
- Water Shut-off Valves Throughout
- Textured Ceiling
- Detachable Hitch
- Carpet Pad with Tack Strip
- Gas Furnace
- 20 Gallon Electric Water Heater
- PEX Water Lines
- Deadbolt at Rear Door
- Sliding Glass Door (Insulated)
- White Interior Passage Doors – Per Floor Plan
- Pre-Finished Door Jambs
- Single Hung Vinyl Windows
- Egress Windows in Bedrooms
- Window Grids
- Insulation: R-22 Roof, R-11 Floor and R-11 Walls
The Higher the "R-Value" the Greater the Insulation Power.
- 7'-6" Sidewall Height – Non Loft Models
- 2 x 4 Sidewall, 16" O. C.
- 2 x 6 Floor Joists, 16" O. C.
- CO₂/Smoke Detector with Battery Backup and False Alarm Control
- Exterior Receptacle with GFI Breaker
- Fiberglass Insulated Heating Runs
- Toe Kick Registers in Kitchen and Bath
- 30 lb. Roof Trusses
- Exterior Light at All Exterior Doors
- Iron Gas Piping with Shut-off Valves
- LP Detector
- Fire Extinguisher
- Soft Close Drawers
- LED Lighting Throughout

For your comfort and safety, Skyline park model designs are approved and inspected for conformance to RPTIA standards. Overall length does not include approximately four foot hitch. Room sizes are measured from floor ends and wall centers.

Because of progressive product improvement, all prices and specifications are subject to change without prior notice or obligation to Skyline Corporation.

Your Retailer, an independent contractor, who is not an agent of Skyline Corporation, is the party responsible for your purchase contract and any additions, deletions, alterations, or attachments made to or in your park model.

YOUR LOCAL SKYLINE RETAILER:

